

**BURNIE BEATS**

**BURNIE GATEWAY PROJECT**





Burnie City Council is working on two exciting projects under the banner of *Burnie Beats* to find and create the beating heart of Burnie by revitalising the CBD and entries to the city.

The State Government funded **pataway/ Burnie Gateway Commission** will assist council to beautify and improve the visual aesthetic of the entrance to the city.



Gateway concept designs have been prepared by two Tasmanian creative teams:

- Futago; and
- David Hamilton/Geoff Farquhar-Still.

Concept:

# Emu Island



Kate Owen  
& Kelly Austin

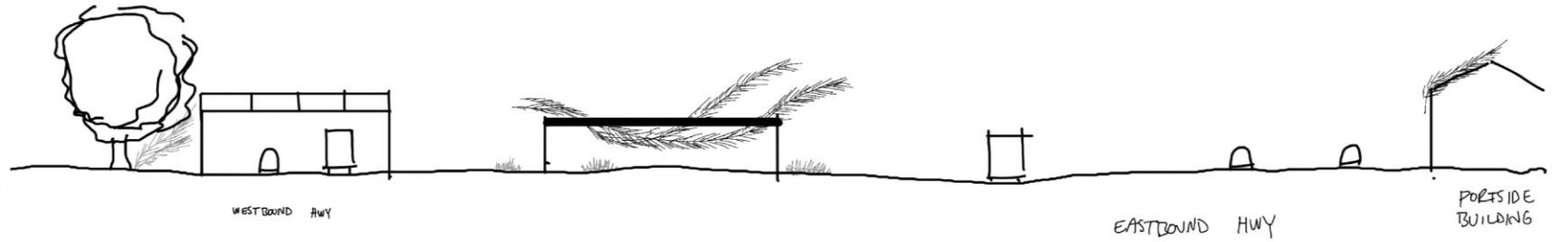
futago\_

## A work that crosses three sites:

1 South Side element

2 Focal sculpture

3 Light-touch element  
on Portside building



Elevation, looking West



3

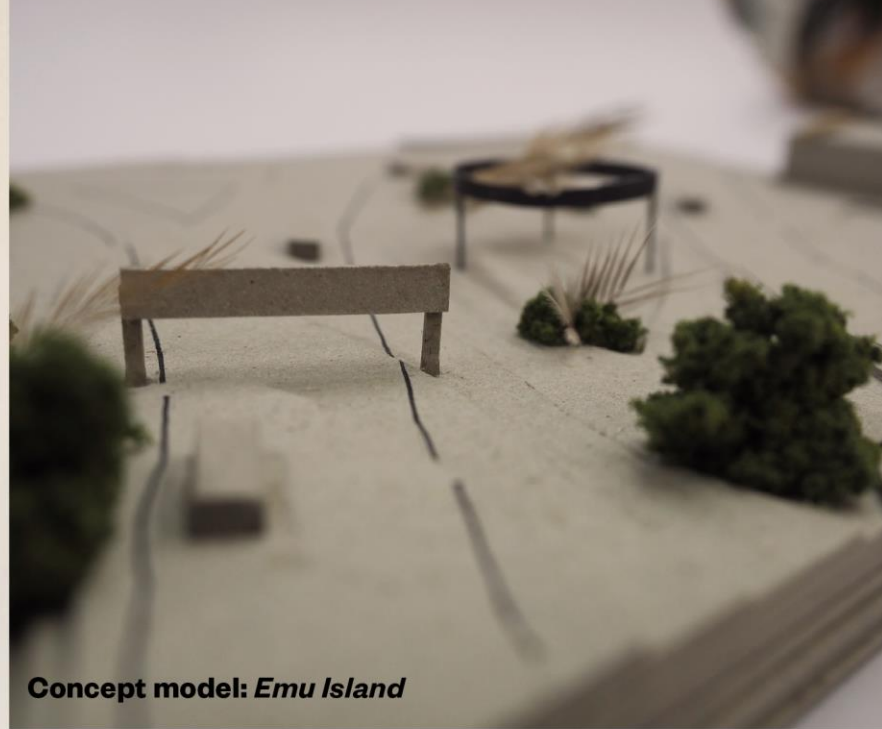
2

1

Plan



**Focal sculpture *Emu Island***



**Concept model: *Emu Island***

**Inspiration: Emu feathers**



# The makings of a gateway



Historic French city gateway - arched form, pedestrians



Contemporary gateway - multiple components, roadway



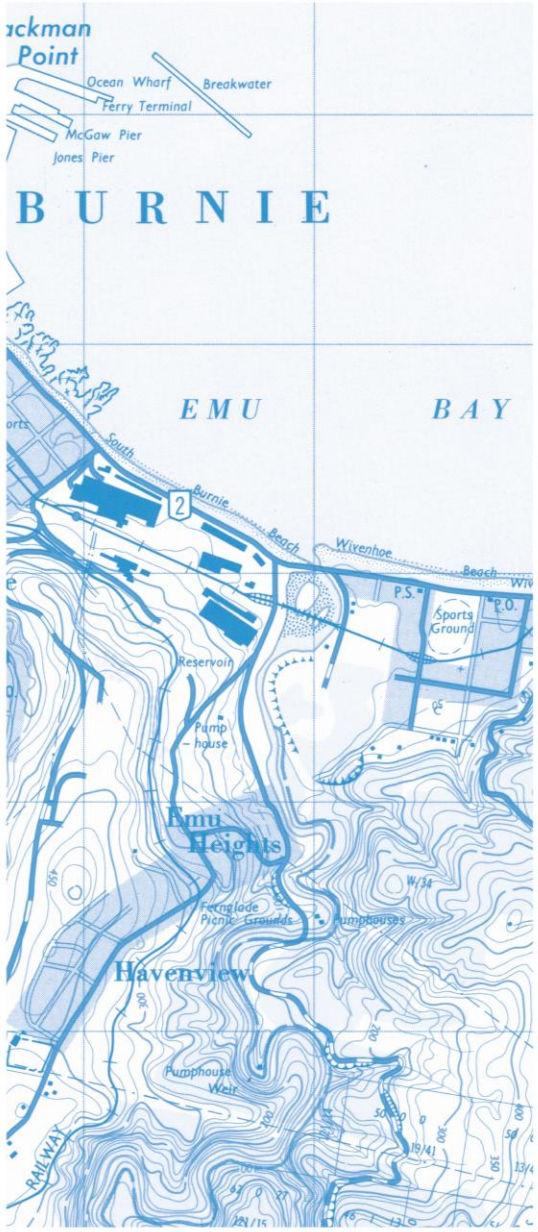
Melbourne International Gateway - arched and multiple component



# Why Emu Island and the Emu feather?



It's approachable to the local community and it resonates



An engraving from 1880 depicting kangaroos, emus and 'tiger wolves' in the Tasmanian bush. (Allport Library and Museum of Fine Arts, State Library of Tasmania)



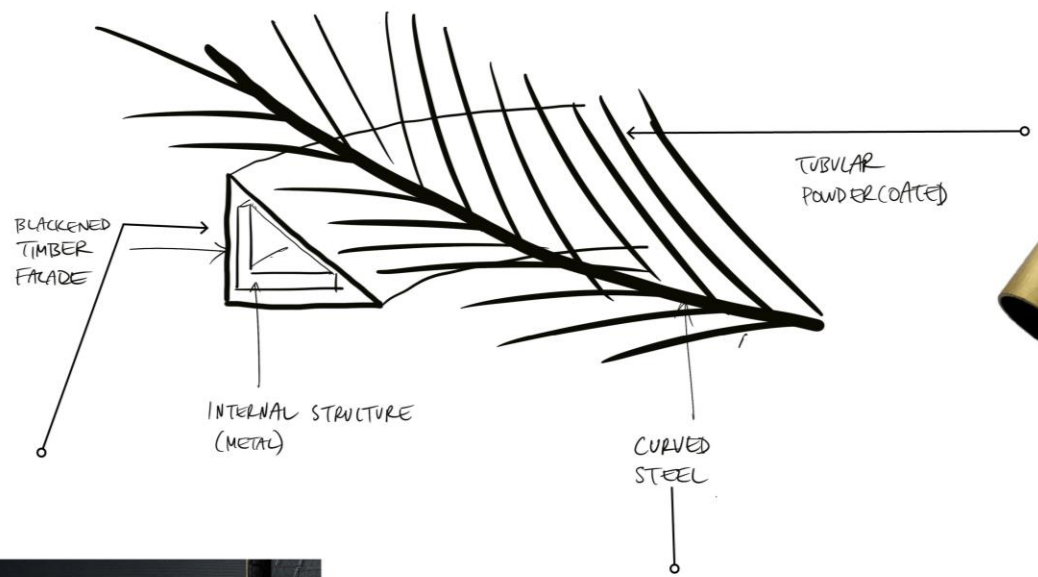
Emu eggs from the Burnie Regional Museum



It's beautiful, graceful and delicate, positively contributing to welcoming. It's form is naturally linear and arrow-like.

# Materiality & construction: A moving, kinetic form

Proposed construction



## Powder-coated tubular steel or aluminium.

Pieces would be curved slightly, and some pieces would have joints to create movement. They would likely be welded to the central structure.



## Shou Sugi Ban charred timber cladding

Also known as Yakisugi or Japanese burnt timber cladding, Shou Sugi Ban is a traditional Japanese method of charring timber with fire. The process results in a black carbon layer on the timber boards which protects the material and reduces its maintenance requirements.

## Central structure

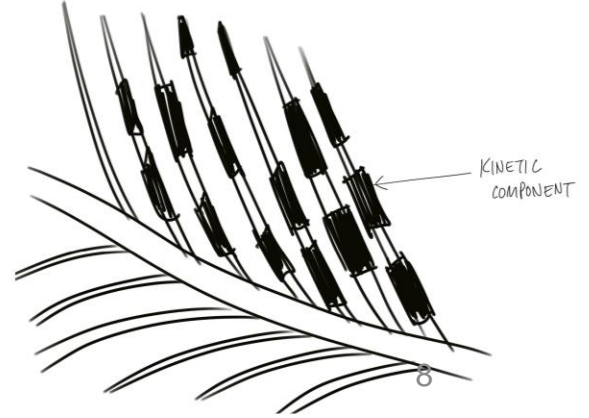
Curved steel, likely flat or solid round section forms the structural spine of the feather.



## Lightness of form

Skygate, by Belinda Smith

*Turbulent Line*, Artist: Ned Kahn, Brisbane Airport. A 5000 square meter kinetic façade, made by Urban Art Projects. Demonstrating how a simple mechanism can create gentle movement with the wind.





# Landscape

Grasses, grouped to look like flocks of sleeping emus. Beautify, naturally enhance and reduce maintenance.



## Native grasses on mass

These images show the types of form we'd like to create that border the sculpture. Their soft tapering edges feather down to the ground, looking like a sleeping emu. Referencing the fact that emus once roamed this place in abundance.



We will work with GHD's landscape architect to devise a low maintenance and attractive solution..



# Continuing the concept

A 2D work that provides interpretation to the entry sculpture



## Paste-up / mural

The idea is to create a central focus in town that provides opportunity to explain the idea behind the sculpture and a bit about Burnie's history. Prompting people to think about what this place was like, not that long ago..



# Emu Island

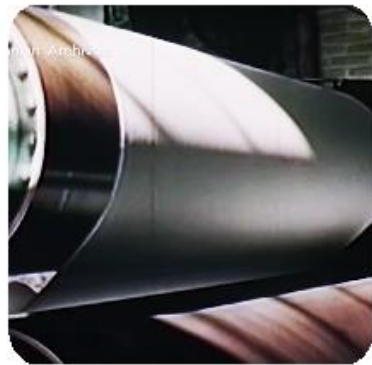
pataway/BURNIE GATEWAY COMMISSION - PUBLIC ART PROJECT

---



W E L C O M E G E S T U R E

Geoff Farquhar-Still and David Hamilton



## *Welcome Gesture*

- *Welcome Gesture* takes its distinctive formal shape from a range of historic and thematic references embedded in the site and surrounds of pataway/Burnie.
- The development of the ideas behind *Welcome Gesture* has seen their genesis in these colors, materials and distinctive shapes, they are the jewels from which the striking form was born and which welcomes all to the City of Makers.
- The concept of a warm and generous welcome underpins the concept behind this proposal, an enigmatic sweep of the hand signalling that all are welcome.

pataway/BURNIE GATEWAY PUBLIC ART COMMISSION

Geoff Farquhar-Still and David Hamilton

PROPOSED ARTWORK

---



---

pataway/BURNIE GATEWAY COMMISSION - PUBLIC ART PROJECT

Geoff Farquhar-Still and David Hamilton

PROPOSED ARTWORK

---



---

pataway/BURNIE GATEWAY COMMISSION - PUBLIC ART PROJECT

Geoff Farquhar-Still and David Hamilton



**Welcome Gesture**  
A Gateway to pataway/Burnie  
The City of Makers

**Emergent Tree species**  
Layer throughout the landscape to provide connection with the existing flower eucalyptus sp.

**Welcome Gesture groundplane**  
Mass planting to connect the sculpture with the newly formed landscape.

**Mounded grass elevated landscape**  
Local indigenous native grasses mass planted to provide a visual softness.

**Landscape "fragments"**  
Sites for the story of pataway/Burnie created from offcuts of *Welcome Gesture*

**Elevated backdrop to sculpture**  
Screening vegetation community on raised earth mounds.

**Woody Meadow**  
a biodiverse mix of plant species providing seasonal interest with an array of flowering native plants.

**Existing West Australian Flowering Gum**  
A significant landscape feature.

PROPOSED ARTWORK

---



---

pataway/BURNIE GATEWAY COMMISSION - PUBLIC ART PROJECT

Geoff Farquhar-Still and David Hamilton



## Tell us what you think!

One concept design will be selected based upon feedback from the community, Council's appointed CBD Reference Group and Elected Members.

The selected creative team will progress their design, build and install the gateway which will be completed by June 2024.

**Check out the pataway/Burnie Gateway concept designs in the council foyer 30 June – 14 July.**

**Go to the council website to provide your feedback or scan the QR code.**

pataway/Burnie Gateway  
Commission

