

CITY OF BURNIE

Tell us what you think about our changing city

Have your say

Strategic Plan and Vision for the next twenty years



SGS
Economics
& Planning

CITY OF BURNIE



Tell us what you think about our changing city

Have your say

**Burnie is changing.
Change brings both challenges
and opportunities.**

How can council meet the needs of all its residents and make Burnie the best regional city in Tasmania?

Our Population is Growing

1,023 population growth in 5 years



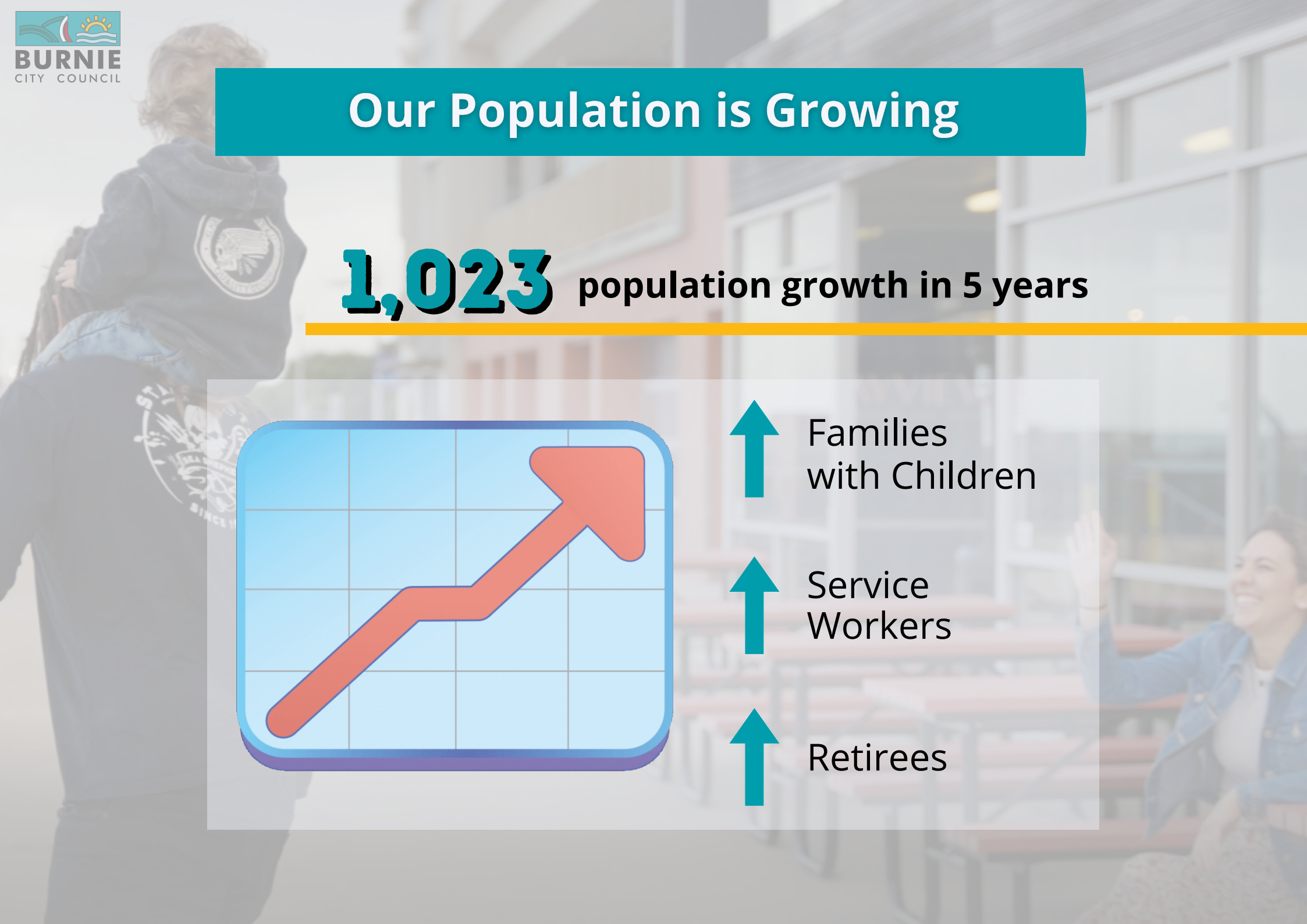
Families with Children



Service Workers

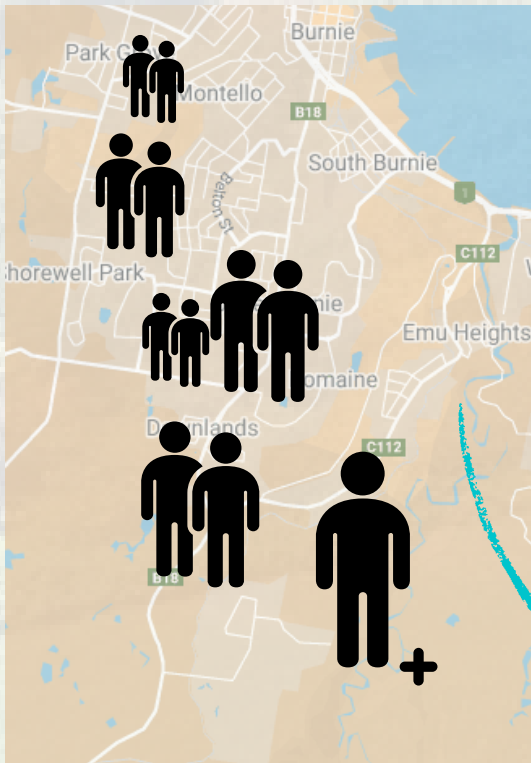


Retirees



Our Population is Diverse

Burnie has
19,918
residents

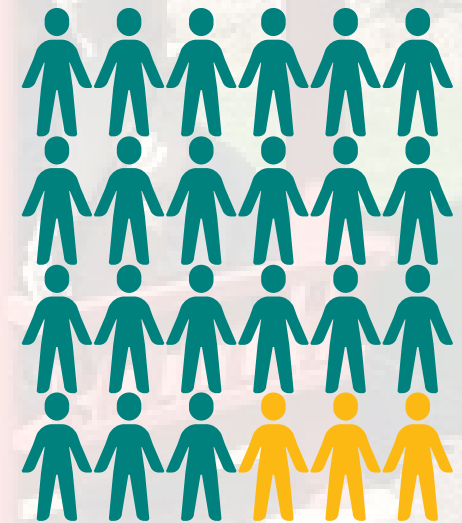


We speak
57
different languages
at home



- 2 Mandarin
- 3 Nepali
- 4 Arabic
- 5 Punjabi
- 6 Sinhalese

8.5%
Aboriginal and
Torres Strait
Islanders



How can Council help house our growing population?

Our **19,918** residents live in **8,857** houses, unit and apartments



Rental Affordability ↓



Twice as many as across the rest of Tasmania



We need 100 to 120 dwellings per year over the next 20 years to house our growing population

How can Council support growth of jobs and services?

**Our economy has grown
1% per year 2010 to 2020**



Jobs have grown across industries



Working from home
has increased, but

28%

of people still
do not have
internet access
at home



There will be
more and
better
jobs in the
future



What more can Council do to make our city centre lively?

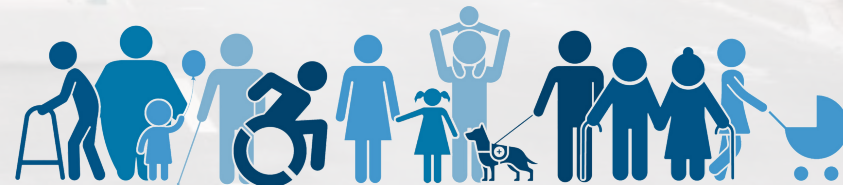
Council is starting to measure how people use the **CBD** so it can increase activity and improve the things people can do there



42%
FEEL
UNSAFE
AFTER
DARK

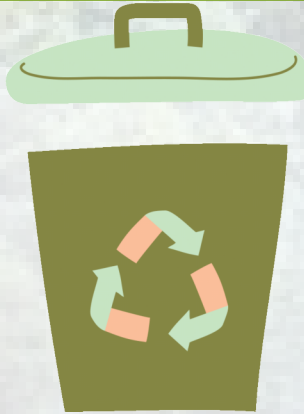
FUTURE

Accessible spaces for all



What more can Council do to help keep our environment healthy?

Bushfires and floods are our main climate risks

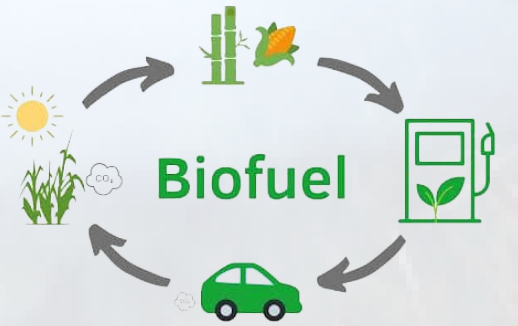
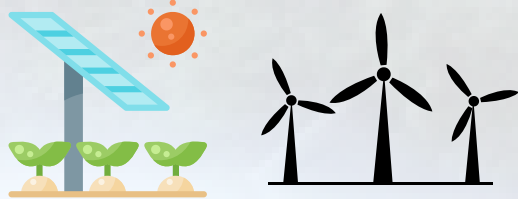


IN 2021/22 COUNCIL DIVERTED

34%

OF HOUSEHOLD
WASTE FROM LANDFILL INTO
RECYCLING

Renewable Energy
Opportunities



Five Council operations now run on renewable energy 😊



How can Council support you to improve health and wellbeing?

43%

of adults have a long-term health condition

14%

of adults have a mental health condition

25%

of preschool children are developmentally vulnerable in their first year of school

How can Council support you to participate to strengthen our community ?

Council supports programs and events to **improve** the sense of **community** and involve community in decisions

Council supports Burnie's over 50 clubs and arts and community organisations, so that residents can participate in activities and events they love



15.5%

of residents volunteer for a local organisation



TIMELINE Strategic Plan and Vision *Burnie*

Community consultation closes

ROUND 1

9 March

22 May

6 June

27 June

3 July

31 July

8 August

22 August

23 August

Final Draft of Strategic Plan created

Community consultation closes

ROUND 2

Final Strategic Plan endorsed

Community consultation opens
ROUND 1

Community Consultation outcomes /data taken to councillors workshop

Community consultation opens - Feedback for DRAFT of Strategic Plan
ROUND 2

Community Consultation outcomes /data taken to councillors for discussions to refine the Strategic Plan

Adopted Strategic Plan to community

*Tell us your
ideas Burnie. .*



How can Council help house our growing population?

How can Council support growth of jobs and services?

What more can Council do to make our city centre lively?

What more can Council do to help keep our environment healthy?

How can Council support you to improve health and wellbeing?

How can Council support you to participate to strengthen our community?

Can we do more ?



By scanning the QR code you can get a complete copy of the Background Report and access to the short survey where you can have your say about Burnie's future

be part of Burnie's story