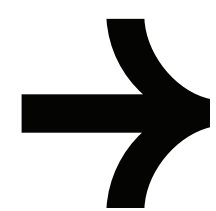
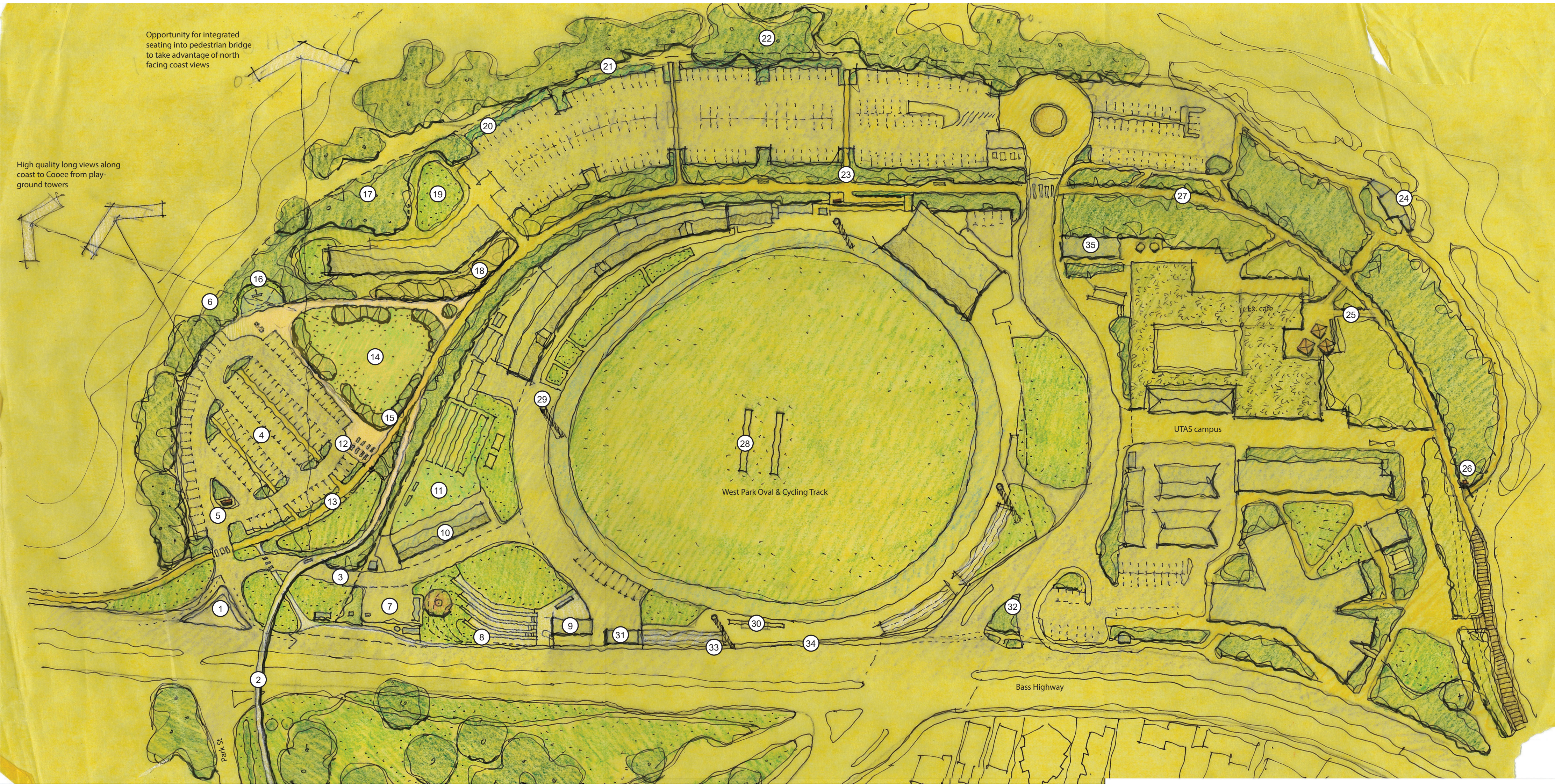


DRAFT MASTERPLAN PRESENTATION: WEST PARK 13.08.2025

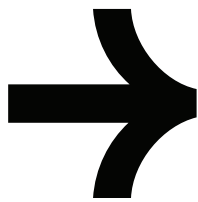


EXISTING CONDITIONS



DRAWING LEGEND

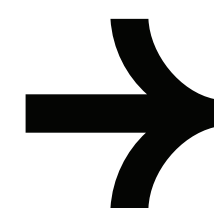
- | | | | | |
|---|--|---|---|---|
| <ul style="list-style-type: none">1. Left in and left out only modified intersection2. Pedestrian bridge nom. 5.2m clearance over road. Utilise rising grade in Burnie Park to minimise ramp approach. Approx. 75m DDA compliant ramp approach required in Westpark. Opportunity for bridge to act as a secondary/southern gateway into Burnie3. Realigned access road to oval to free up space4. New sealed carpark with WSUD planting at edges- approx.100 spaces5. Wayfinding signage totem near entry6. Continue penguin protection fence along western edge7. Wash down bay redevelopment with new chemical/fuel storage8. Removal of house and replace with new formal terrace seating on grass mound for spectating oval or events such as woodchopping | <ul style="list-style-type: none">9. New can bar with protected area for queuing10. Shed realigned and extended11. New turf practice wicket with extended synthetic warm up space around nets12. New bike parking area13. Continue shared pedestrian/bike path along existing rail line- including steel rail line as edging to one side to continue existing path detail14. Open lawn for flexible use and pop up events15. Shelter tree planting for lawn area to incorporate seating- provides barrier to informal parking on lawn16. Small half-court basketball court -protected with new indigenous | <ul style="list-style-type: none">shrub planting to protect from wind17. New indigenous coastal vegetation planting to provide a measure of protection from prevailing wind18. Infill planting into patchy revegetation areas19. Opportunity for sheltered lawn areas for possible outdoor performance space20. Extend WSUD carpark edge planting to treat runoff21. Removal of path along northern edge of carparks and revegetate22. Infill revegetation planting23. New DDA compliant ramp, stronger sense of arrival/entry and seating area to create suitable main entry (refer infill sketch)24. Proposed terraced seating to accommodate visitors at Penguin | <ul style="list-style-type: none">Observation building (refer infill sketch)25. New path access to create stronger connection to existing cafe. reinforce entry with external furniture, umbrellas etc - protected from prevailing winds26. Realign path intersection to prioritise movement, especially bikes, along shared path and away from Penguin observatory- reinforce with wayfinding signage totem27. Low level bollard lighting to illuminate whole length of shared path - lighting style to be chosen to minimise light pollution of penguin areas28. Additional turf wicket29. Light upgrades to existing towers | <ul style="list-style-type: none">30. Sight screens extended to cover entire wicket block31. Retain old ticket building32. Improved entry and exit signage for vehicles accessing Westpark33. Investigate the potential to replace the existing paling fence with a visually permeable yet secure alternative, enabling visual connection to the oval from the Bass Highway34. Assess opportunities to widen and improve the safety of the existing footpath along the Bass Highway. This may occur incrementally in response to any future upgrades to the highway35. Explore collaborative opportunities with UTAS to provide shared access to bike parking and a bike repair station for use by the wider community |
|---|--|---|---|---|



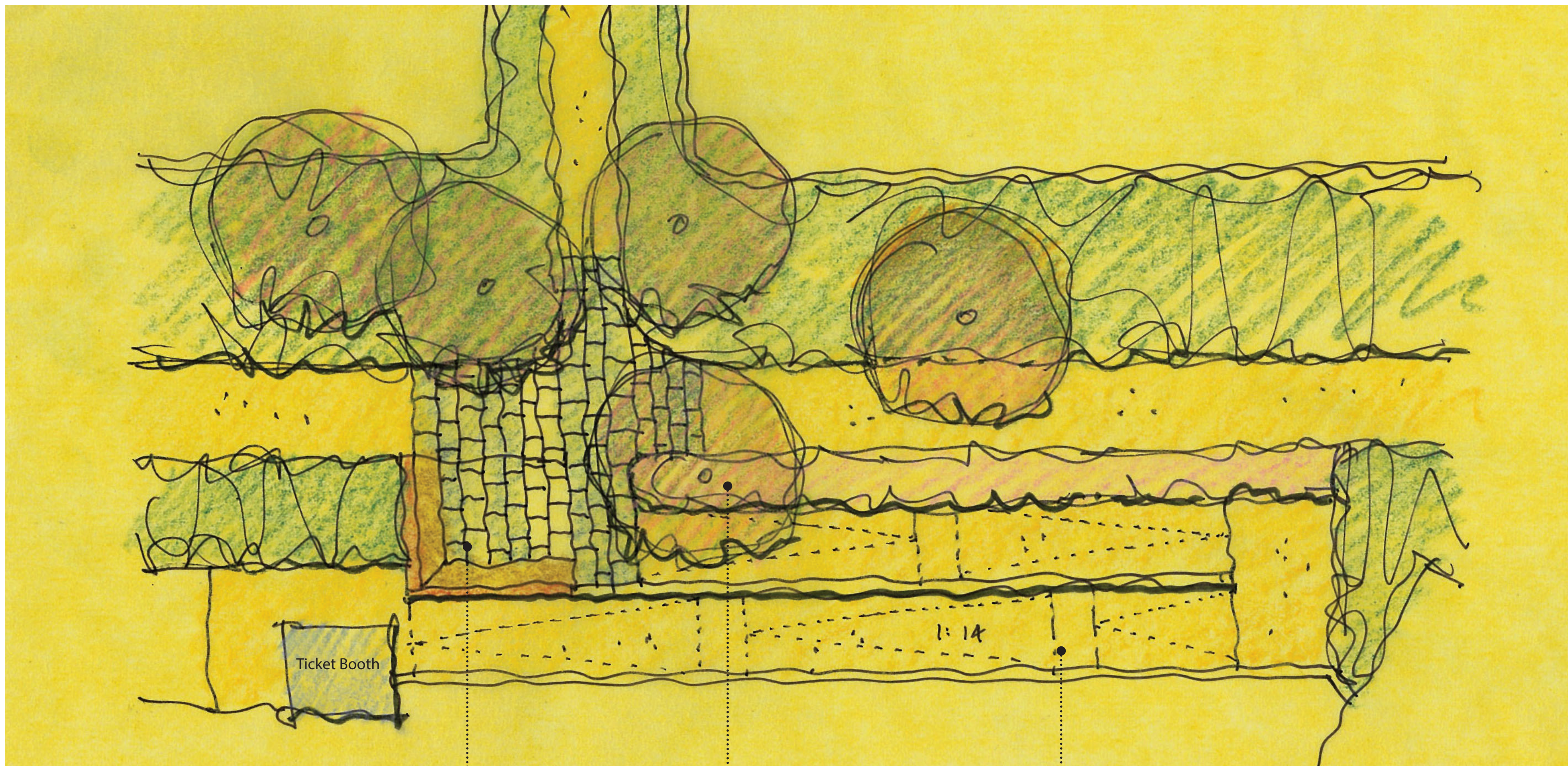
DRAFT MASTERPLAN



EXISTING CONDITION



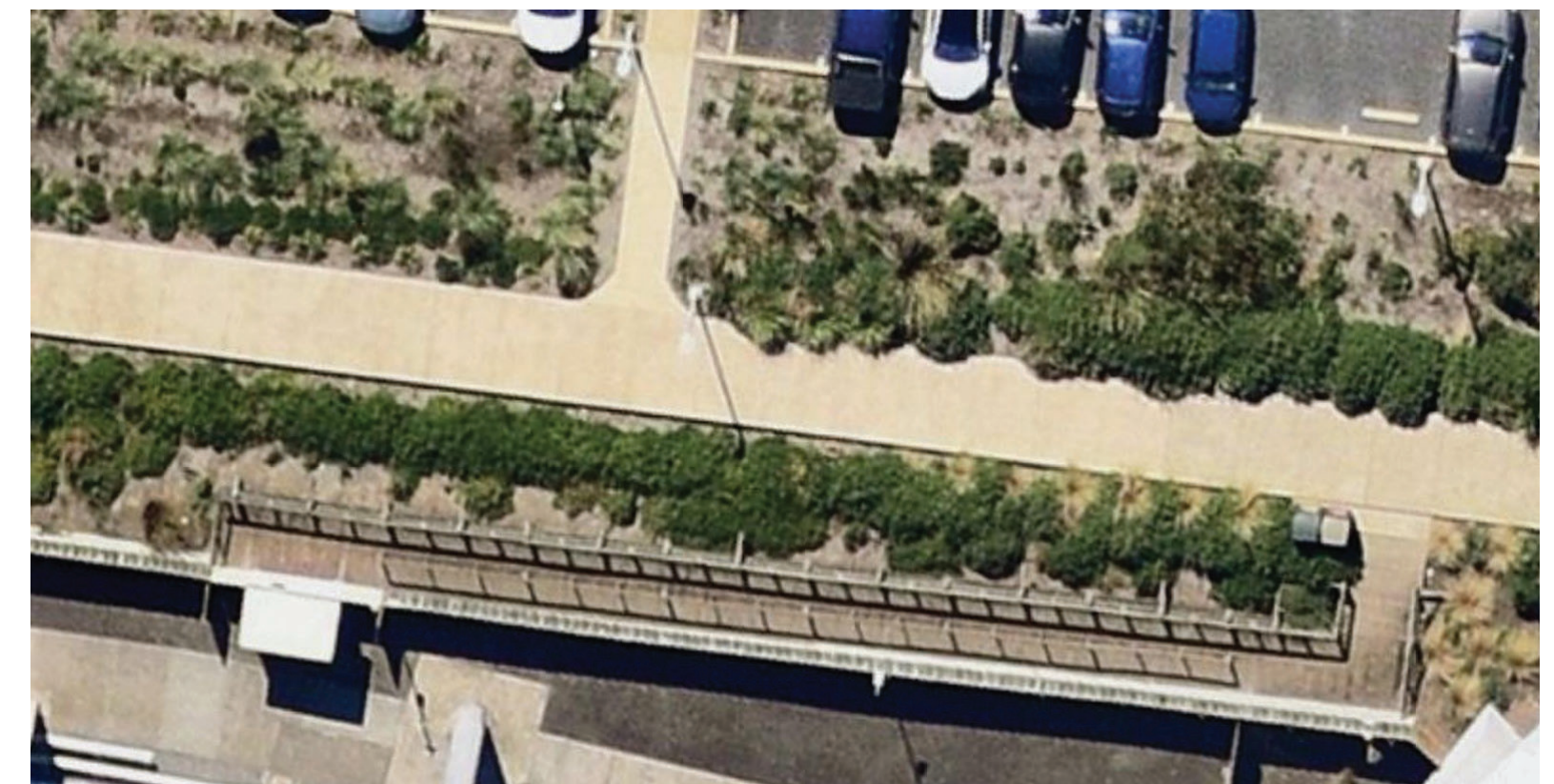
PENGUIN OBSERVATION BUILDING CONCEPT



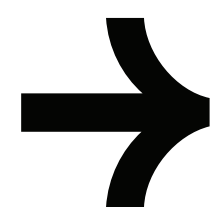
Paved threshold, seating and signage to signify main entrance and slow down shared path traffic

Feature trees & planting to help reinforce main entry

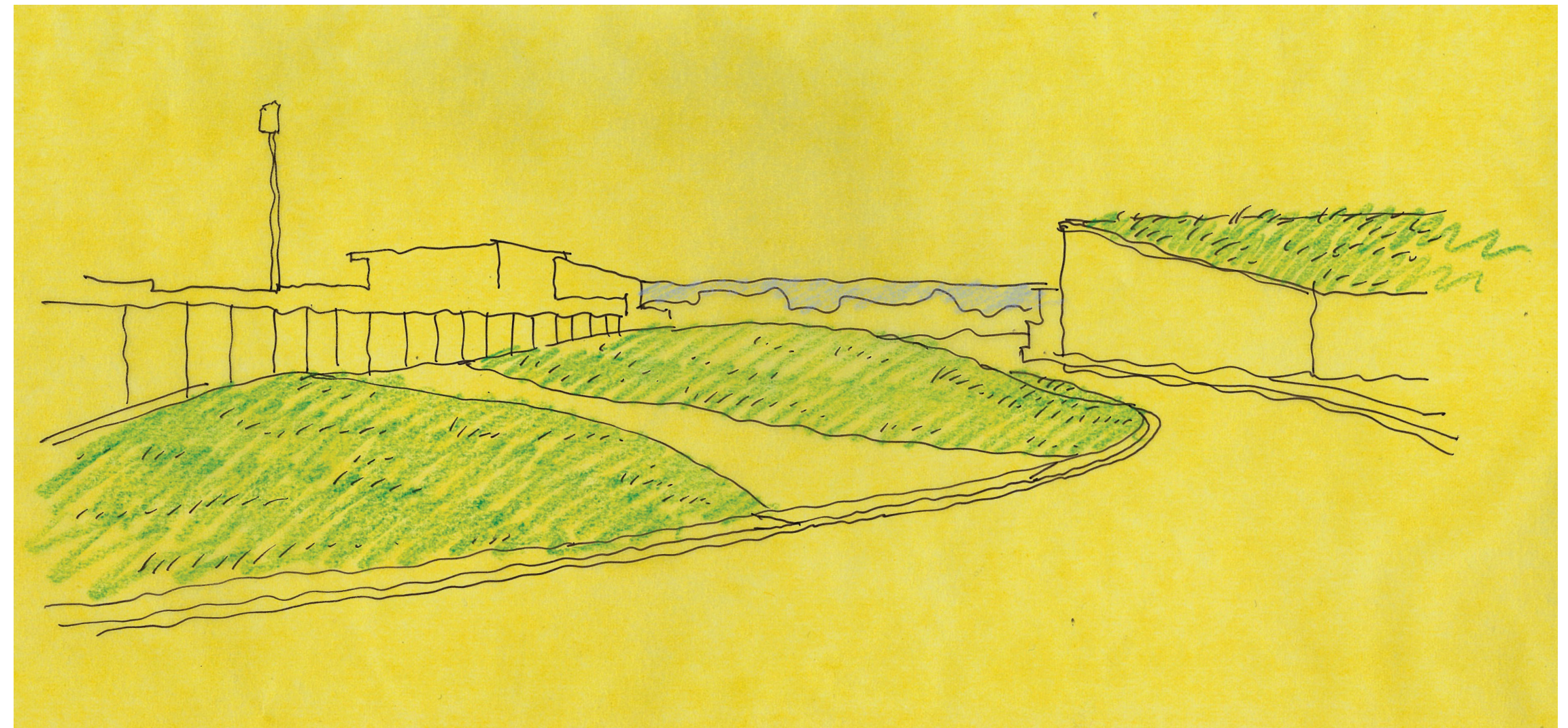
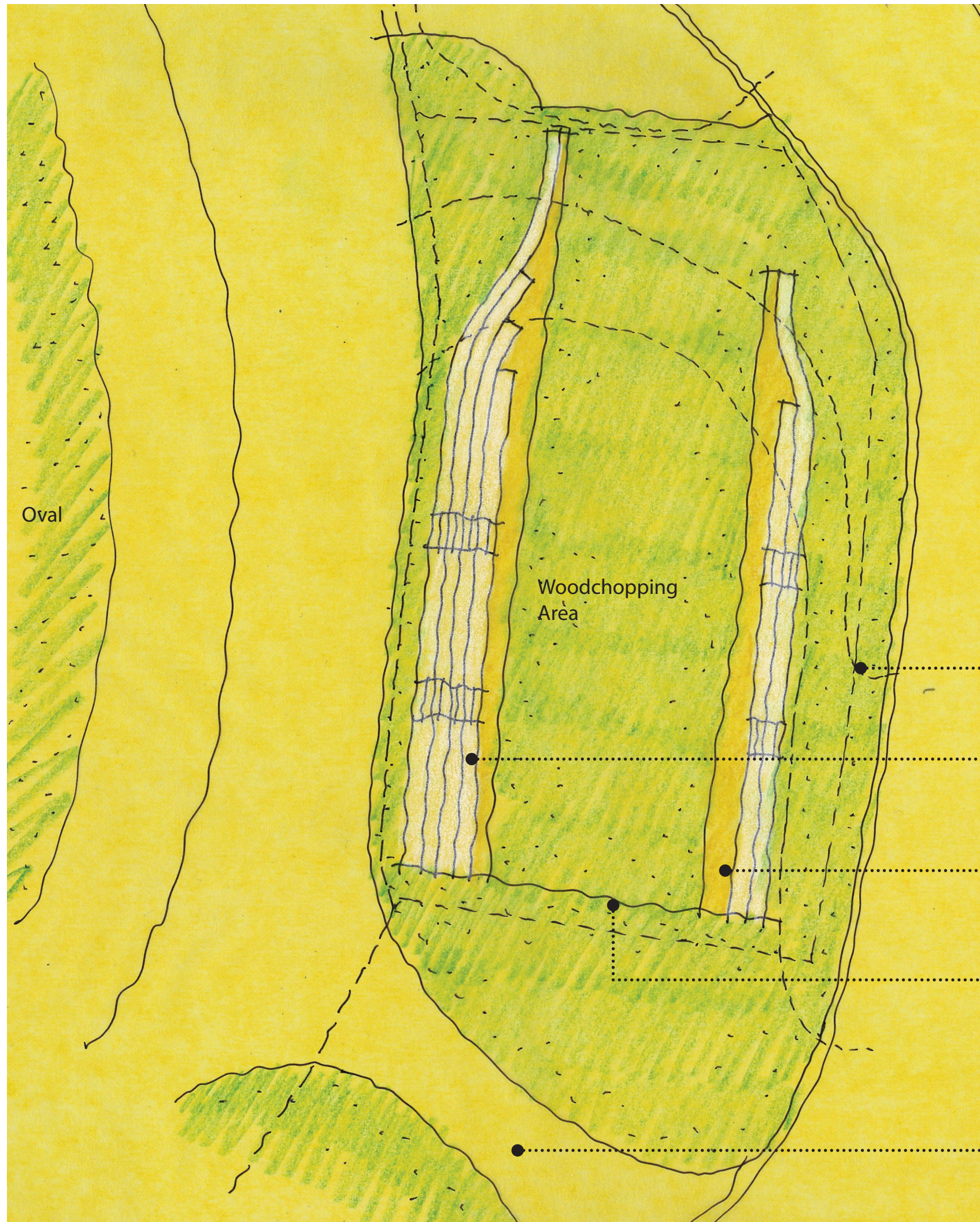
New non-slip coloured concrete DDA compliant ramp



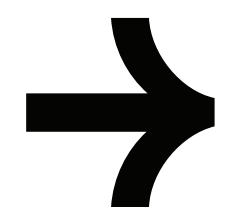
EXISTING CONDITION



TICKET BOOTH ENTRY RAMP CONCEPT



EXISTING CONDITION



WOODCHOPPING ARENA (OPTION B)