



BURNIE HERITAGE PROJECT

Volume 3: Inventory of Indicative Heritage Places Burnie City Council

February 2010



Contents

1.	Introduction	4
1.1	Background to the Project	4
1.2	Project Report Volumes	4
1.3	Key Tasks	4
1.4	Project Limitations	5
1.5	Defining the 'Place'	5
1.6	Identified Places	5
1.7	Identification of Places	6
2.	Periods of Development and Significance	7
2.1	Built Values	7
2.2	Other Potential Values	8
3.	The Victorian Period	10
3.1	Background	10
3.2	Local Context	10
3.3	Style Description	10
3.4	Example Places	11
3.5	Significance Assessment	11
4.	The Federation Period	14
4.1	Background	14
4.2	Local Context	14
4.3	Style Descriptions	14
4.4	Example Places	15
4.5	Significance Assessment	16
5.	The Interwar Period	19
5.1	Background	19
5.2	Style Descriptions	20
5.3	Example Places	20
5.4	Significance Assessment	21
6.	Results of the Inventory	24
6.1	Places of State Significance	24
6.2	Places of Local Significance	24



6.3	Places not Meeting Local Significance Threshold	24
6.4	Places of Potential Significance	24
6.5	Inventory of Places	24

Table Index

Table 1	Assessing the built values of places of the Victorian period	12
Table 2	Significance assessment of places from the Federation period	17
Table 3	Significance assessment of places from the Interwar period	22
Table 4	Places that met the State level threshold	27
Table 5	Places that met the local level threshold	30
Table 6	Lower Priority Places that met the local level threshold	38
Table 7	Table of Places that do not meet the local level threshold	42
Table 8	Places of Unknown or Potential Significance	49

Appendices

A	Places of State Significance
B	Places of Local Significance
C	Places not meeting Local Significance Threshold
D	Places of Unknown or Potential Significance
E	Maps of Heritage Places
F	Inventory of Places



1. Introduction

1.1 Background to the Project

GHD was commissioned by Burnie City Council and Heritage Tasmania to undertake a heritage survey for the municipality. The objective of the study is to produce an integrated heritage study that considers the regional history, heritage assets within the municipality and provides strategies for ongoing heritage management.

1.2 Project Report Volumes

As part of this commission, a thematic regional history has been developed. The thematic history is presented in Volume 1¹ and forms the context for the project. The Volume 1 document provides an historical summary of the major historical events, associations and land uses that have shaped the local area.

The Volume 2 report provides the detailed methods for the project, results from the community consultation component of the study, analysis of Burnie's heritage features and makes recommendations for ongoing heritage management for the municipal area.

While Volume 2 presents the general results of the heritage project, this Volume 3 report provides more detail on the individual heritage sites identified. Such places include houses, commercial buildings, churches, reserves, schools and so on.

Given the high number of residential places of potential value identified during the fieldwork, this report provides an overview of main periods of development, architectural stylistic descriptions and overall significance assessments.

This report fulfils the objective outlined in the project brief to identify places that are of historical cultural value to the State and regional community.

1.3 Key Tasks

In response to the brief, the following tasks were undertaken for this project:

- ▶ Consideration of the City's historical themes and identify linkages to existing places within the municipality;
- ▶ Review of existing heritage lists;
- ▶ Discussion with community members about places important to them and field work throughout the municipal area;
- ▶ Fieldwork to identify places of potential aesthetic, architectural, archaeological, associative, historical, social and scientific value;
- ▶ Assessment of the physical extent, attributes and heritage values of individual and groups of places; and

¹ GHD 2009 Burnie Thematic History.



- ▶ Ranking of places as being of local or State significance.

1.4 Project Limitations

The following limitations of the study are acknowledged:

- ▶ Consideration of Aboriginal heritage issues was not included within the scope of this study, as this aspect of Tasmania's heritage is managed by Aboriginal Heritage Tasmania in accordance with the Aboriginal Relics Act 1975;
- ▶ Site visits were undertaken with potential heritage places identified from public roadways. It is possible that some places may not have been identified due to distance from the roadway, screening caused by trees, other buildings and so on;
- ▶ Places partially visible from roadways and public viewing points of potential significance have been identified and it is recommended that on site investigations be undertaken by Council or Heritage Tasmania to enable assessment; and
- ▶ The historical context of each identified place could not be examined within the scope of this project. It is expected that places may have further historical or social value which could elevate their level of significance.

1.5 Defining the 'Place'

Unless specified, the curtilage of a place relates to the full property. As places were identified from public roadways, the extent of heritage values of a particular property may vary, and further analysis may refine the definition. This may particularly apply to large or rural properties. The inclusion of these large or rural properties also may not have identified all features of potential value, such as outbuildings, plantings and so on.

1.6 Identified Places

The Appendices of this report contain the results of the heritage survey. The survey results are arranged by suburban area. Summary tables of the places identified are included in Appendices A-D.

In summary:

- ▶ Appendix A contains a list of those places considered to be of State significance. That is, those places where the heritage values contribute to the understanding of the wider pattern and evolution of the Tasmania's history and heritage, including places that contribute significantly to our understanding of the regional pattern and development of the State.
- ▶ Appendix B contains a list of places considered to be of Local significance. That is, those places assessed as having architectural, historical, scientific, social or technological significance. The inventory process has identified a large number of places, particularly housing from the late nineteenth, through to the mid-twentieth century. It is acknowledged that the resources available to Council to consider these places for inclusion in the Scheme may be limited. It is therefore



recommended that Council progressively consider these places for inclusion based on available resources and planning priorities. To assist this process, Appendix B distinguishes between those places which at a prima facie level, are considered as having a higher degree of local heritage significance, from those places with a lower degree of significance. Places with a lower degree of local significance can be considered a lower priority for further consideration by Council.

- ▶ Appendix C contains a list of those places considered to not meet the Local significance threshold. These places were identified for their potential significance, however on assessment did not demonstrate aspects of any of the criteria identified in the HCHA, at either a local or State level.
- ▶ Appendix D contains a list of places of unknown or potential significance. This category identifies those places where a determination of significance could not be made, for example, where the place could not be adequately viewed from public spaces; where insufficient location details are known, or where further historical research and field inspection is required. These places of unknown or potential significance may include places with State, Local or lower level heritage values. It is recommended that Heritage Tasmania and Council undertake further assessment of these places.

1.7 Identification of Places

It is of note that the places identified in this report are indicative examples of the types of heritage places found within Burnie. All photos were taken from public viewing points and as such, the properties discussed in this report may not be the only places of their type in the study area.

As discussed in Volume 2, future management of heritage places within Burnie is yet to be determined and will form a further stage of the project.

2. Periods of Development and Significance

The site work and consultation findings resulted in a broad range of places being considered in Burnie for their potential heritage values.

These included built places such as residences, commercial buildings, and civic places such as churches, schools and halls. In addition, parks, gardens and recreational areas, cemeteries, memorials, lookouts, reserves, archaeological sites, movable heritage items and collections and infrastructure were also considered for their potential significance.

2.1 Built Values

The majority of heritage places identified in Burnie were residential and commercial buildings dating to key periods of Burnie's development. In order to achieve consistency in assessing the number of built places identified, standard significance assessments and stylistic descriptions have been prepared.

These descriptions and assessments have been informed by an understanding of the key periods of local development. The places demonstrate the architectural and stylistic influences common to their period throughout Tasmania and Australia.

Consistent with Burnie's key periods of development, many of local built places identified in this study date from the late nineteenth century through to the mid-twentieth century, and the number of places, their location, material and scale can generally be considered to represent these key periods.

The values of these places differ. Some have specific historic value for demonstrating an important aspect of the evolution or pattern of development of Burnie, or an association with a particular individual or group. Broadly, they also show how people lived and worked at a particular time.

Another key value often relates to their built form, and any architectural or aesthetic values that are demonstrated. Within this broad group of built places there is considerable variation, for example, in construction period, material, location, scale, detailing and an ability to represent a hierarchy of social status.

Despite these differences, these places also share physical similarities: often related to the architectural or stylistic influences of a period of development. For example, places constructed during the Federation period (c.1890-c.1914) often exhibit forms and detailing popular at that time, such as asymmetrical arrangements, projecting bays, prominent street facing gables, and sinuous motifs of the Art Nouveau movement. The level of stylistic motifs used on these buildings often depicts aspects of class at that time. That is, wealthy people may have been able to employ architects and skilled builders in the design of their buildings using the fashionable motifs of the day, whereas buildings constructed for workers were often simple and vernacular in their form, with little applied decoration.

In describing the architectural values of these places, the standardised terminology of *Identifying Australian Architecture*² has been applied. This work is particularly useful for understanding the evolution of Australia's architecture, and identifying key periods, and indicators of styles. However, the architectural styles used by Apperly *et. al.* may not be the only way of describing these places, nor were they necessarily used to describe architecture at that particular time.

It is also acknowledged that during periods of transition, some buildings demonstrate various stylistic influences, and may not neatly be classified as a particular style.

The following sections aim to broadly explain the key periods of development for Burnie, and how these periods were demonstrated in local built form. General discussion of these types of places also avoids undue repetition within the assessment Inventory.

Analysis of the Heritage Inventory indicates that the range of built places in Burnie can be classified into broad architectural groups. For the Victorian period (c.1840-c.1890), the Victorian Georgian style predominates, during the Federation period (c.1890-c.1914), vernacular, 'Queen Anne', and bungalow variations are common, and during the Interwar period (c.1914-c.1940), Art Deco, and Functionalist styles are most often used.

2.2 Other Potential Values

This section considers the values that each place encompasses as an example of a building from a particular period in Burnie's history. However, some places may satisfy other criteria.

2.2.1 Social Values

Through consultation with community members, it was found that certain places have strong or special meaning to local people and such values are noted in the Inventory where relevant. Such places often included public buildings and other local meeting places.

Though the consultation process, many people raised the merit of considering conservation of places that reflect particularly the two key periods of growth in Burnie's history. They suggested that places from the early twentieth century and late nineteenth century provide insight into the impact of tin mining on the town's development. Similarly, places of the mid twentieth century demonstrate the important role of the paper mill in the development of a town and a community. Such places tell strong stories about Burnie's history and heritage, as well as providing a valuable character to the local area.

² R Apperly, R Irving, P Reynolds, *A Pictorial Guide to Identifying Australian Architecture. Style and Terms from 1788 to the Present*, Angus & Robertson, 1994



2.2.2 Associative and Historical Values

With further research, it may be that individual places have historical significance or are associated with the life or works of a person, a group or an organisation that was important in Tasmania's or Burnie's history. Similarly, closer examination may establish that a place has research potential, relating to possible archaeological resources. Further research may also uncover specific stories associated with places that contribute to their historical significance.

With the number of places identified, it is not possible to research fully each and every place for these potential further values.

3. The Victorian Period

3.1 Background

The Victorian period between c.1840-c.1890 was an era of dynamic growth in Australia. Increases in pastoral activity and the discovery of gold in the eastern states contributed to a period of transition, with Australia becoming a major part of the British Empire rather than simply a mining outpost.³

3.2 Local Context

In the local context, Burnie witnessed relatively little development until the discovery of the Mt Bischoff tin field in 1873, when the town began to increase in importance as a service centre in the region. It was during the late nineteenth century that the Central Business District began to evolve and take on its current form, with Wilson Street becoming the main commercial street.

Built development from the nineteenth century is comparatively rare in Burnie, both in the city and the suburbs.

However, there are later buildings in Burnie built in the Federation Period (c. 1890- c. 1914) which continued to use architectural styles and features of the earlier Victorian period.

3.3 Style Description

The Victorian Georgian architectural style reflected the symmetry continuing through from the Georgian period. However into the second part of the nineteenth century, changes appeared due to developments in more sophisticated materials and techniques. For example, roofing slate replaced timber shingles; and corrugated iron became a roofing material of choice due to transportability and ease of construction. The corrugated iron verandah roof became a feature of buildings of this style, and more ornate decoration was provided by mass produced cast iron products commonly used in verandahs.

Advancements in machine tools for timber shaping led to the production of turned posts, balusters and decorative features. Larger pane glass was available leading to the use of sash windows, with single sheets of glass.⁴

The broad characteristics of the Victorian Georgian style include a symmetrical façade, a medium pitched hipped roof, a verandah under either a broken back or separate roof, slender verandah posts, and a simple chimney. As can be seen in the following examples of this architectural type some places have additional characteristics such as sash windows with either small or large panes, a panelled timber door, transom and side lights, decorative valance, and either close or boxed eaves.

³ R Apperly, *et. al. op. cit.*, p.41

⁴ *Ibid*, p.42

While the Victorian era saw a more ornate and decorative approach to architecture, the simplicity of the Georgian form influenced many vernacular buildings, such as those apparent within Burnie.

3.4 Example Places

Below are some examples of the different variations of the Victorian Georgian style in Tasmania.



Detached dwellings of the Victorian period



Conjoined dwellings of the Victorian period-with firewall



Victorian residences with Federation detailing on dormer windows.

3.5 Significance Assessment

The following provides an assessment of the significance of the places against the criteria of the Historic Cultural Heritage Act.

The places noted in the inventory as being of a style from the Victorian period can have heritage significance for their architectural values and contribution to the character of the streetscapes or landscape setting in which it is situated. The places are also significant as a representative of the development of Burnie during the Victorian era, or in some cases, shortly thereafter during the Federation period. These values primarily relate to historical significance and creative or technical achievements. The level of integrity of these buildings varies, as can be seen in the images in the Inventory, though each should be considered an important contribution to the historical fabric and character of Burnie. For each place, it should be considered that it is this fabric, which is of heritage significance. However, further research may reveal an important social history associated with these places.

The following table provides a general assessment of Victorian Georgian places against relevant criteria.

Table 1 Assessing the built values of places of the Victorian period

Criterion	Assessment
Criterion (a): it is important in demonstrating the evolution or pattern of Tasmania's history; (or that of the local area).	The Victorian Georgian places within Burnie are of significance historically, for their contribution to and understanding of the early development and settlement patterns the municipality.
Criterion (b) it demonstrates rare, uncommon or endangered aspects of Tasmania's heritage; (or that of the local area).	While Victorian Georgian places are not rare in the broader Tasmanian context, given that Burnie largely developed in response to the wealth generated by tin mining in the late nineteenth century, these places are considered to be rare in the local context.
Criterion (c): it has potential to yield information that will contribute to an understanding of Tasmania's history; (or that of the local area).	Potential
Criterion (d): it is important as a representative in demonstrating the characteristics of a broader class of cultural places;	Potential
Criterion (e): it is important in demonstrating a high degree of creative or technical achievement; (either to the State or the local area). - It exhibits design or aesthetic qualities.	The places are of significance for their ability to demonstrate the principle characteristics of the Victorian Georgian style. These characteristics are found in the use of symmetrical façades, medium pitched rooflines, verandahs under an either broken back or separate roof, slender verandah posts, and simple chimneys. Some places have additional characteristics such as sash windows with either small or large panes, a panelled timber door, transom and sidelights, decorative valance, and either close or boxed eaves.
Criterion (f): it has strong or special meaning for any group or community because of social, cultural or spiritual associations; (either within a State or local context).	Potential



Criterion (g): it has a special association with the life or works of a person, a group or an organisation that was important in Tasmania's history; (or the history of the local area).	Potential
--	-----------

4. The Federation Period

4.1 Background

In the Australian context, the Federation period was marked by substantial advances in public and private transport-the key to the growth of the towns and cities.

New suburbs developed further out from the central business districts and advantage was taken of the vast spaces, reinforcing the desire for a single story house on a relatively large block of land compared to previous periods.⁵ The style was also apparent in shopping areas, often with residences on the floor above.

4.2 Local Context

In the local context, with the tin mining boom and the success of the local agricultural industry, the Burnie township became an important port and service centre into the twentieth century. It became a municipality in its own right in 1908, with the establishment of the Burnie Council. The suburban growth was generally centred on the inner suburban areas to support the growing local population.

Much of the building stock from the Federation period is reflective of the Federation Queen Anne style of architecture. Others are vernacular in style, rather than demonstrating any particular architectural achievement. Their simplicity and modest scale is indicative of the living conditions of the working population during the late nineteenth century and early twentieth century. Importantly, for a region with rich timber resources, weatherboard was the preferred building material.

Some of the building stock constructed in the Federation period is reminiscent of building styles of the Victorian era, with some places reflecting the broad characteristics of the Victorian Georgian style.

The places identified in the Inventory are expected to have been built c.1890 - 1920 and reflect the growing development of Burnie at this time, in response to improved transport and the emergence of employment opportunities in the region.

4.3 Style Descriptions

4.3.1 Vernacular Federation buildings

The vernacular places from the Federation period include stylistic forms like simple gable and verandah details, and fenestration which is indicative of the Federation period.

4.3.2 Federation Queen Anne

Many of the Federation Queen Anne Places feature a medium pitched, hipped roof clad in corrugated iron, a street facing gable, verandah and brick chimney. The

⁵ *Ibid*, p.99

majority of these places have timber panel doors with transom and/or side lights. Federation Queen Anne residences are often of simple 'L'- plan shapes. The front room often projects forward towards the street and a verandah extends along the remainder of the frontage.

As can be seen in each individual photo some places have additional characteristics such as decorative brackets, valance, bargeboards with finial, half-timbered effect in gable, and terracotta pots on the chimney.

4.3.3 Federation Bungalow

Broad characteristics of the Federation Bungalow style are a medium-pitched gabled roof clad in tiles or corrugated iron, large, simple roof planes, deep verandas or porches, prominent gable verge, a street facing gable and brick chimney. Many of these places have timber panel doors.

Some places have additional characteristics such as decorative brackets, bargeboards with finial, half-timbered effect in gable and dormer windows. Concepts of easy access to the outdoors, comfort and a casual lifestyle underpin this style of architecture. This style was common towards the late Federation Period.

4.4 Example Places

Below are some examples of the different styles from the Federation period in Tasmania.

Example places



Vernacular Federation



Federation Queen Anne



Federation Bungalows





4.5 Significance Assessment

The places noted in the inventory as being of a style from the Federation period can have heritage significance for their architectural values and contribution to the character of the streetscapes or landscape setting in which it is situated. These places are significant for their ability to demonstrate the development of Burnie during the Federation period. The level of integrity of these buildings varies, as can be seen in the images, though each should be considered an important contribution to the historical fabric and character of Burnie. For each place, it should be considered that it is this fabric, which is of heritage significance. However, further research may reveal an important social history associated with these places.

Table 2 Significance assessment of places from the Federation period

Criterion	Assessment
Criterion (a): it is important in demonstrating the evolution or pattern of Tasmania's history; (or that of the local area).	The places identified in the inventory as from the Federation Period are of significance historically, for their contribution to and understanding of the development and settlement patterns of Burnie. They also reflect the rapid period of growth, when Burnie became a major service centre for the nearby Mt Bischoff tin mine.
Criterion (b) it demonstrates rare, uncommon or endangered aspects of Tasmania's heritage; (or that of the local area).	N/A
Criterion (c): it has potential to yield information that will contribute to an understanding of Tasmania's history; (or that of the local area).	Potential
Criterion (d): it is important as a representative in demonstrating the characteristics of a broader class of cultural places;	Potential
Criterion (e): it is important in demonstrating a high degree of creative or technical achievement; (either to the State or the local area). - It exhibits design or aesthetic qualities.	<p>Some places are of significance for their ability to demonstrate the principle characteristics of the Federation Queen Anne or Federation bungalow styles. Others of a vernacular style are not considered to meet this criterion.</p> <p>Federation Queen Anne</p> <p>These characteristics are found in the use of asymmetry, medium pitched hipped roof clad in corrugated iron, a street facing gable, verandah and brick chimney. The majority of these places have timber panel doors with transom and/or side lights.</p> <p>Federation Bungalow</p> <p>These characteristics are found in the use of a medium-pitched gabled roof clad in tiles or corrugated iron, large, simple roof planes, deep verandas or porches, prominent gable verge, a street facing gable and brick chimney. The majority of these places have timber panel doors.</p>



Criterion (f): it has strong or special meaning for any group or community because of social, cultural or spiritual associations; (either within a State or local context).	Potential
---	-----------

Criterion (g): it has a special association with the life or works of a person, a group or an organisation that was important in Tasmania's history; (or the history of the local area).	Potential
--	-----------

5. The Interwar Period

5.1 Background

Architectural trends and other cultural aspects between the wars show the growing influence of the United States, having an impact on Australian society and architecture, such as the adaptation of the Californian bungalow.

Economics and speed of construction to cater for interwar population growth and returned soldiers resulted in the wide scale establishment of simpler versions of the Bungalow style. Impacts of the Great Depression forced the use of simpler materials and relatively basic construction methodologies.

Another important architectural development of the time was Art Deco. Art Deco motifs became particularly popular in exteriors and interiors of buildings. The style 'celebrated the exciting, dynamic aspects of the machine age'. Features of the style were symbolic of speed, power, industry or progress.⁶

In the local context, industry became a dominant theme in Burnie's twentieth century development, notably with the establishment of the Australian Pulp and Paper Manufacturer's Mill. Burnie provided the ideal location for the establishment of a major industrial complex: it had a deep water port, was close to the resources needed for paper production, had an established railway system, and cheap hydro electric power to run the Mill. Production of fine papers began in 1938, with an immense impact on the town; its population, development, economy and environment. For example, from 1938 to 1945, the population grew from some 4000 to 10,000 people.

The social impact of this growth was vast. The devastation of the Great Depression continued to be felt in Burnie during the late 1930s, but with the establishment of the Mill, many unemployed people were provided a new future and optimism. A range of social services and groups formed alongside the Mill including low cost housing, a welfare scheme, sports teams and dances. The onset of World War Two also created a demand for paper products.

Along with the Mill, major development occurred to provide the housing, commercial, educational and social services for the growing population of the town. Rapid responses to housing provision were needed to address this sudden growth.

The growth prompted a surge in housing construction in the area, with many houses of vernacular interwar styles development along the outer areas of the town. Some more decorative Interwar Californian Bungalows were also established during this time.

Ongoing evolution in building styles and tastes, materials and planning resulted in simpler, more functional buildings, evoking subtle indicators of the Art Deco style of architecture with smooth external surfaces, stepped parapets, steel framed windows and decorative motifs. Housing developments continued to demonstrate social structures. For example, Cunningham Street in South Burnie had APPM executives

⁶ *Ibid*, pp.149, 188

housed on the upward slope of the street in larger, more elaborate houses, while on the lower side were more modest housing for foremen's accommodation. Areas of worker accommodation also began to develop in areas like Montello and Upper Burnie, where workers assisted each other in constructing homes, often from form work concrete with simple Art Deco motifs.

The variance in appearance of the places of the Interwar period in Burnie strongly reflects the eclecticism of the period, common throughout Australia.

5.2 Style Descriptions

5.2.1 Interwar Californian Bungalow

The broad characteristics of Interwar Californian Bungalows include a visually prominent low pitched roof, a low pitched street facing gable, wide overhanging eaves, tapered pylon verandah posts and a taper-cut barge-board.

5.2.2 Art Deco Style

The broad characteristics of the Art Deco style are horizontal styling with streamlined effects and curved edge façade, as well as large pane windows and entrances situated under simple concrete porches and simple, yet decorative motifs.

5.3 Example Places

Below are some examples of the different styles from the Interwar period in Tasmania.

Example places



Vernacular Interwar



Interwar Californian Bungalows (first example photograph from RNE listing)⁷



Art Deco



5.4 Significance Assessment

The places noted in the inventory as being of a style from the Inter-War period can have heritage significance for their architectural values and contribution to the character of the streetscapes or landscape setting in which it is situated. The places are also significant as a representative of the development of Burnie during the Interwar era. The level of integrity of these buildings varies, as can be seen in the inventory images, though each should be considered an important contribution to the historical fabric and character of Burnie. As a collection of places, the buildings of the Interwar period reflect the eclectic tastes of this period in time. For each place, it should be considered that it is this fabric, which is of heritage significance. However, further research may reveal an important social history associated with these places.

⁷ Photo Reference: http://www.environment.gov.au/cgi-bin/heritage/photodb/imagesearch.pl?proc=detail;barcode_no=rp04513

Table 3 Significance assessment of places from the Interwar period

Criterion	Assessment
Criterion (a): it is important in demonstrating the evolution or pattern of Tasmania's history; (or that of the local area).	<p>The places identified in the inventory from the Interwar period are of significance historically for their contribution to and understanding of the development and settlement patterns of Burnie.</p> <p>They also represent the defining time when industry became a dominant theme in Burnie's development, with the establishment of the Australian Pulp and Paper Manufacturer's Mill. Places built specifically for the purposes of mill employees reflect the early hierarchical structure of the organisation, with larger, more elaborate homes for executives, and simpler, more modest housing for worker's accommodation.</p> <p>Some of the Interwar places reflect low cost housing initiatives at the time.</p> <p>The eclectic collection of interwar styles within Burnie reflects the broader trends of housing development within Australia.</p>
Criterion (b) it demonstrates rare, uncommon or endangered aspects of Tasmania's heritage; (or that of the local area).	N/A
Criterion (c): it has potential to yield information that will contribute to an understanding of Tasmania's history; (or that of the local area).	Potential
Criterion (d): it is important as a representative in demonstrating the characteristics of a broader class of cultural places;	Potential



Criterion	Assessment
<p>Criterion (e): it is important in demonstrating a high degree of creative or technical achievement; (either to the State or the local area).</p> <p>- It exhibits design or aesthetic qualities.</p>	<p>Some places are of significance for their ability to demonstrate the principle characteristics of the Interwar Californian Bungalow and Art Deco styles. Others of a vernacular style are not considered to meet this criterion.</p> <p>Interwar Californian Bungalow</p> <p>The principle characteristics of this style include visually prominent low pitched rooflines, street facing gables, wide overhanging eaves, tapered pylon verandah posts, and a taper-cut barge-board.</p> <p>Art Deco</p> <p>The principle characteristics of this style include horizontal styling with streamlined effects and curved edge façade, large pane windows and entrances situated under simple concrete porches.</p>
<p>Criterion (f): it has strong or special meaning for any group or community because of social, cultural or spiritual associations; (either within a State or local context).</p>	<p>Potential</p>
<p>Criterion (g): it has a special association with the life or works of a person, a group or an organisation that was important in Tasmania's history; (or the history of the local area).</p>	<p>Potential</p>



6. Results of the Inventory

6.1 Places of State Significance

Places identified as being of State level heritage significance are attached at Appendix A to this document. A total of 25 places in Burnie meet the State threshold of significance.

Broad management recommendations for places of state significance are made in Volume 2. More specific management comments are made in the inventory for each individual place.

6.2 Places of Local Significance

Places identified as being of local level heritage significance are included in the table attached at Appendix B to this document. A total of 285 places were identified throughout the municipality.

Broad management recommendations for places of state significance are made in Volume 2. More specific management comments are made in the inventory for each individual place (Appendix E).

6.3 Places not Meeting Local Significance Threshold

Places identified as not meeting the local level of heritage significance are included in the table attached at Appendix C to this Document. These places were assessed as not meeting this level where they were poor examples of their type or had a low level of integrity due to modifications.

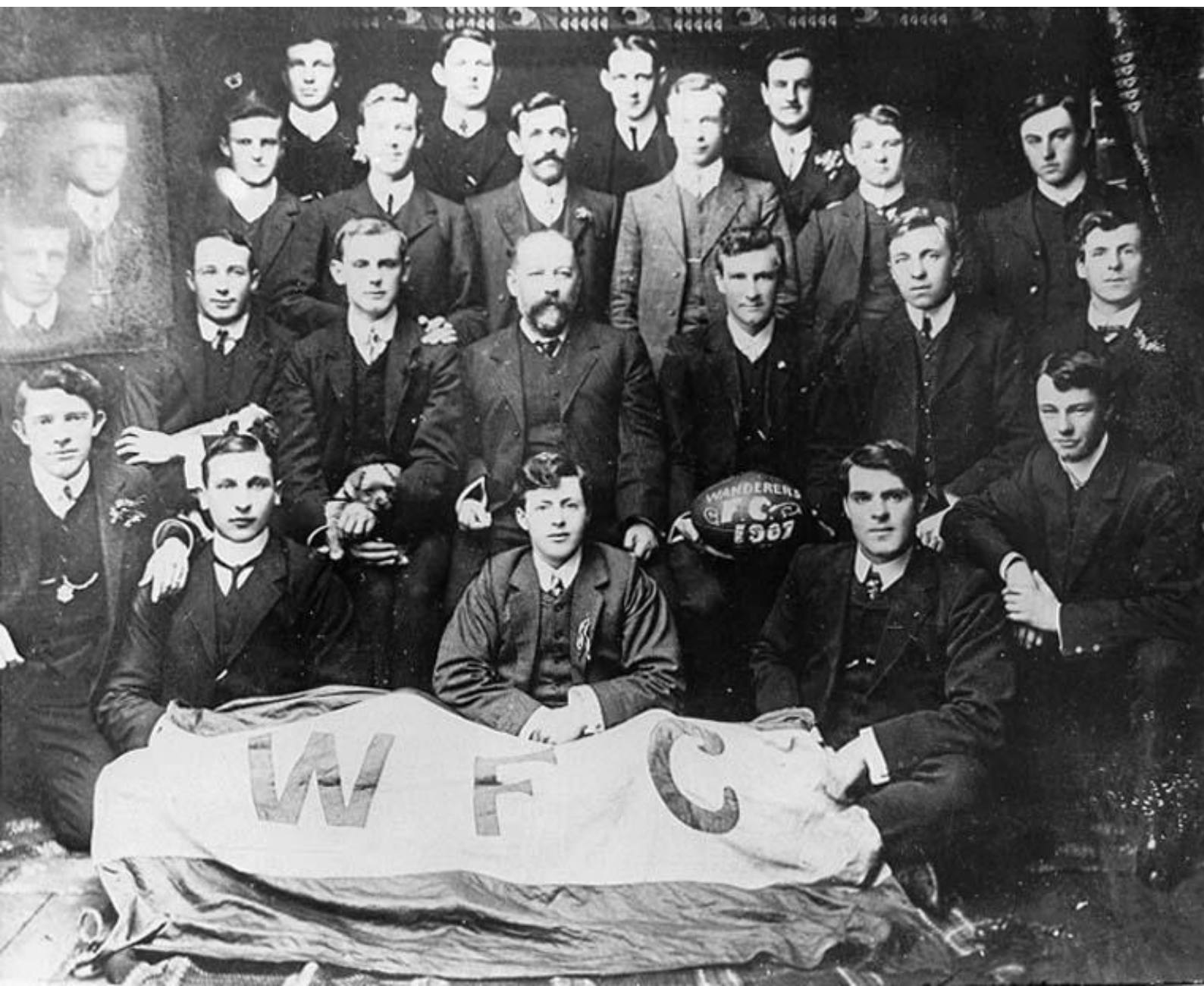
6.4 Places of Potential Significance

Given that site work was non-intrusive and undertaken from public roadways, a number of places were identified as possibly being of some level of heritage significance. These places are identified in the table attached at Appendix D. These places should be subject to further investigation by Council or Heritage Tasmania.

It is acknowledged that such an assessment would require permission from owners to access their land.

6.5 Inventory of Places

The maps showing the identified heritage places are attached at Appendix E to this document. The full inventory of places identified in this study is attached at Appendix F to this document. The inventory identifies place addresses, titles references and property identification numbers. It also notes the level of significance for each place and provides broad management principles for each place. Volume 2 in the report series covers overall management recommendations for the identified sites.



APPENDICES



Appendix A

Places of State Significance

Table of Places



Table 4 Places that met the State level threshold

Street Name	No	Name	PID
Aileen Crescent	9	Glen Osborne	6130105
Aileen Crescent	10	House	6129817
Bass Highway		Burnie Park	7585806
Bass Highway		Emu River Bridge and Abutments	
Brickwell Street	1	Oakleigh Park	6142210
Cattley Street	1	Former CBA Bank	6133277
Cattley Street	14	Commercial Building	6114391
Cattley Street	30	Lincoln House	6114383
Cattley Street	43	St Luke's	6133437
Cattley Street	49	St George's Church	6143803
Coal Mine Road (off Upper Natone Road)		Hampshire Silver Mine	
Emu Bay Railway Line		Emu Bay Railway (Burnie – Waratah)	
Fern Glade Road		Fern Glade Pumping Station	2071136
Government Main Line Railway		Western Line Railway	
Marine Terrace	14	Commercial Building	1510467
Marine Terrace	77	The Mill	7595617
Marine Terrace	10 to 11	Former Hotel	6120329
Marine Terrace	27-29	Green's Hotel	6142114
Marine Terrace		Railway Station	7609329
Mount Street	22	Club Hotel	3612107
Mount Street	108	St Mary's by the Sea Church and School	6143897
Mount Street	55-59	Baptist Church	7629776
Mount Street	58-66	Burnie Uniting Church	6143846
Poke Street	7	St David's Anglican Church	6122631
Ridgley Highway	1026	Former Church	6194424
Ridgley Highway		Hampshire Hills Station	2927782
Spring Street	1 to 3	Portside (Fmr Burnie Tech)	6155521
Upper Natone Road (& Brick Rd)		Hampshire Hills Brick Pits	
William Street	7	Wyona	6117648



Street Name	No	Name	PID
Wilson Street	109	Gospel Hall	6155601
Wilson Street	88-98	Police Headquarters	7387439



Appendix B

Places of Local Significance

Tables of Places (Including Places of Lower Priority)



Table 5 Places that met the local level threshold

Street Name	No	Name	PID
Aileen Crescent	14	House	6129833
Aileen Crescent	21	House	6130033
Alexander Street	50	Former Church	7183209
Alexander Street	54	Legal Aid	6130447
Alexander Street	52-54	Apartment Block	7183209
Alexander Street	53-55	Former Residence	2086434
Algona Avenue		Round Hill Lookout	6182925
Amanda Court	13	Romaine Reserve and Reservoir	1928900
Amy Street	8	Lenna	6110980
Anglesea Street	11	House	6130551
Applebys Road, Upper Natone	4	Upper Natone Hall	6191493
Argyle Street	9	House	6130922
Atkinson Street	7	House	6131044
Bass Highway		Old North Coast Road (Bass Highway)	
Bass Highway	2	School of Domestic Arts, Old Burnie High School	2180973
Bass Highway	29	House	6111481
Bass Highway	1a	Round Hill Point Lighthouse	2648986
Bass Highway	335-339	Cheshunt	2070053
Bass Highway	35 - 37		1960505
Bass Highway		West Park	2213333
Bass Hwy	76	House and Shop	6112476
Bass Hwy	121	House	7673750
Bass Hwy	201	House	6112214
Bathurst Street	23	house	6158626
Blythe Road, Upper Natone		Upper Natone Forest Reserve	7163312
Bourke Street	10	Former Residence	6113575
Brickport Road	20	House	6113671
Burnell Street	2	House	6114260



Street Name	No	Name	PID
Burnell Street	2	Cohee Sale Yards and Railway Platforms	6114287
Bryan Street	2	House	6114113
Cam River (riverbank)		Cam River Bridge Abutments	
Camena Road, Natone		Blythe River Bridge	
Cattley Street	17	Commercial Building	6133349
Cattley Street	19	Commercial Building	6133357
Cattley Street	23	Trustee House	6133365
Cattley Street	50	Former Methodist Church	6114375
Cattley Street	26-30	Commercial Building	6133402
Cattley Street	3 to 5	Commercial Building	1928468
Cattley Street	33-35	Commercial Building	6133402
Cattley Street	39-41	Commercial Building	6133429
Cattley Street	4 to 6	Commercial Building	2275796
Charles Street	11	House	7492618
Charles Street	13	House	6133517
Circular Road, East Ridgley	85	Willowvale	7695570
Circular Road, East Ridgley	86	Pet River Reservoir	6195291
Circular Road, East Ridgley	325	Summit Lodge	6195101
Circular Road, East Ridgley	718	Forbes Park	2076797
Circular Road, East Ridgley	784	The Croft	6194870
Circular Road, Waratah Crescent, East Ridgley		APPM Precinct	numerous
Collins Street	11	House	6133998
Cooper Street	4	House	6134827
Corcellis Street	15	House	6135096
Crown Circuit (off		Blythe River Bridge Abutments	
Crown Street	5	House	6114973
Cunningham Street	2	House	7361052
Cunningham Street	5	House	6135686
Cunningham Street	6	House	7361079
Cunningham Street	7	House	6135678



Street Name	No	Name	PID
Cunningham Street	9	House	6135651
Cunningham Street	15	House	6135627
Cunningham Street	17	House	6135619
Cunningham Street	25	House	6135563
Cunningham Street	29	House	6135547
Cunningham Street	31	House	6135539
Cunningham Street	33	House	6135520
Cunningham Street	35	House	6135512
Deacon Street	1	House	6135862
Fern Glade Road	15-17	Fern Glade Reserve	7635543
Flinders Street	55	House	7578964
George Street	2	Ridgley Recreation Ground	7710590
George Street	33	Former Church	6193296 7387500, 7387519, 7387527
Hale Street	3 to 6	Terrace Houses	
Hale Street	8	House	6138318
Halstead Street	9	House	6119504
Jones Street	17	house	7187824
Jones Street	20	House	6139943
Jones Street	21-21A	Terraces	6140119
Jones Street	23	House	6140100
Linton Street	9	House	6140979
Lottah Road, Natone		Silver Mine	2071259
Mace Street	5	House	6119504
Marine Terrace	22	Commercial Building	
Marine Terrace	30	Commercial Building	6142122
Marine Terrace	32-34	Commercial Building	6142149
Marine Terrace		Emu Bay Railway Company Sheds	1917742
Menai Street	2	House	6143002
Menaire Road	15	Farm House	7673881
Monington Street	15	Upper Burnie Gospel Hall	6143117



Street Name	No	Name	PID
Mooreville Road	83	House	1893496
Mooreville Road	135	House	6187136
Mooreville Road, Mooreville	390	Farm House	7344455
Mooreville Road, Mooreville	420	Community Centre (Former School)	6187996
Mooreville Road, Mooreville	824	Former Dairy and House	1837355
Morse Street	24	House	6143678
Mount Street	126	House	6144013
Mount Street	151	House	6144961
Mount Street	163	House	6144910
Mount Street	167	House	6144881
Mount Street	231	House	6170916
Mount Street	276	House	6171062
Mount Street	217-219	House	6144638
Mount Street	54-56	Advocate Building	6143811
Natone Road, Natone	383	House	6189107
Natone Road, Natone	564	House	6189342
Natone Road, Natone	619	House and Former Shop	6189473
Natone Road, Natone	571	Cottage	7489494
North Prospect, West Ridgley	69	Farm House	6198636
North Terrace	2	Hilder Parade	2745778
North Terrace	3	Basalt Columns	2715624
North Terrace	26-27	Hotel Regent	6121452
Old Surrey Road	443	Farm House and Outbuilding	2732352
Olive Street	1	House	7578622
Olive Street	6	House	6121997
Olive Street	7	Manresa	7578614
Olive Street	8	House	6121989
Olive Street	6	House	6121997
Olive Street	14	House	6121954
Oonah Road	663	Farm House	6197940



Street Name	No	Name	PID
Pearl Street	27-45	Wivenhoe Cemetery	6149359
Pearl Street		Showgrounds	7721484
Pine Avenue	8	House	6147943
Pleasant Street	7	House	6148065
Pleasant Street	18	House	6148030
Princes Street	1	House	6122674
Princes Street	2	House	6123028
Princes Street	3	House	6122682
Princes Street	4	House	6123001
Princes Street	5	House	6122690
Princes Street	6	House	6122981
Princes Street	7	House	6122703
Princes Street	9	House	6122711
Princes Street	10	House	2598413
Princes Street	18	House	6122922
Princes Street	14-16	House	7171339
Queen Street	4	House	6123124
Queen Street	12	House	6123167
Queen Street	15	House	6113516
Queen Street	18	House	6123255
Queen Street	20	House	6123319
Queen Street	22	House	6123327
Queen Street	24	House	6123335
Queen Street	26	House	6123335
Queen Street	28	House	6123343
Queen Street	30	House	6123351
Queen Street	32	House	6123378
Queen Street	34	Kandaha	6123386
Queen Street	38	House	6123394
Queen Street	40	Burnie Club	7658489
Reeves Street	18	House	2290646



Street Name	No	Name	PID
Ridgley Highway	221	Farm House	6188104
Ridgley Highway	329	Water Tower Base	6188155
Ridgley Highway	409	Railway Shed	6188198
Ridgley Highway	444	Armitage	6188710
Ridgley Highway	530	Cottage	7635519
Ridgley Highway	538	House	1843464
Ridgley Highway	635	Former Service Station	6188470
Ridgley Highway	701	House	6196817
Ridgley Highway	914	Ridgley School Shop	6194723
Ridgley Highway	1002	House	6194512
Ridgley Highway	1004	House	6194504
Ridgley Highway	1012	House	6194483
Ridgley Highway	1016	House	6194467
Ridgley Highway	1018	House	6194459
Ridgley Highway	1036	House	6194387
Ridgley Highway	2753	27 Mile Sawmill and Siding Site	6195689
Ridgley Highway	2753	29 Mile Sawmill and Siding Site	6195689
Romaine area		Romaine Creek Water Supply System	
Saundridge Road	7	House	6124899
Saundridge Road		Cooee Memorial Hall	7535091
Scarfe Street	15	House	7901231
Scarfe Street	16	House	7901231
Scarfe Street	21	House	6190319
South Riana Road, Upper Natone		Blythe River Bridge	
Stowport Road	574	Stowport Recreation Ground	6191100
Stowport Road	577	Former Shop and House	7382603
Stowport Road		Stowport Uniting Church	6191127
Strahan Street	36	House	6151635
Strahan Street	38	South Burnie Sports Ground	7595609
Strahan Street	45	House	6151408



Street Name	No	Name	PID
Strahan Street	58	House	2841372
Strahan Street	62	House	6151723
Studholme Street	38	House	6151870
Studholme Street	40	House	6151889
Studholme Street	42	House	6151897
Sutton Street	16	House	6152478
Upper Stowport Road	50	Former School	6191928
View Road	5	House	6153809
View Road	29	House	6153673
View Road		Coronation Park	4203640
Villiers Avenue	9	House	6127491
Wellington Street	32-36	Terrace Houses	6154190
West Mooreville Road	124	House	6193085
West Mooreville Road	1260	Dunollie	6197254
West Park Grove	1	House	6121284
West Ridgley Road	44	Ridgley Cemetery	6197887
West Ridgley Road	245	Guide River Falls Reserve	7429547
William Street	1	House	2034335
William Street	3	House	6154940
William Street	5	House	6128507
Wilmot Street	9	Commercial Building	6129227
Wilmot Street	77	VDL Co. Store Crest	6128646
Wilmot Street	77	Burnie Pioneer Museum Collection	6128646
Wilmot Street	72-78	Shop	1993630
Wilmot Street (fronts Mount Street)	36	Commercial Building	1743965
Wilson Street	1	Beach Hotel	6129235
Wilson Street	13	Brownell's Place	6155679
Wilson Street	14	Commercial Building	6128937
Wilson Street	15-17	Commercial Building	6129198
Wilson Street	25	Commercial Building	6129163



Street Name	No	Name	PID
Wilson Street	39	Commercial Building	6129147
Wilson Street	40	Commercial Building	6129008
Wilson Street	45	Commercial Building	6129120
Wilson Street	75	Commercial Building	6155679
Wilson Street	112	Former Residence	6155097
Wilson Street	158	Burnie Apartments	6155257
Wilson Street	186	House	6155441
Wilson Street	103-105	Commercial Building	7209106
Wilson Street	15-17	Brownells Place	612919
Wilson Street	15-17	Commercial Building	612919
Wilson Street	19-23	Commercial Building	6129171
Wilson Street	34-38	Commercial Building	6128961
Wilson Street	47-49	Commercial Building	6129112
Wilson Street	56-62	Commercial Building	6129040
Wilson Street	77-85	Commercial Building	6155660



Table 6 Lower Priority Places that met the local level threshold

Street Name	No	Name	PID
Abbot Street	9	House	6129470
Abbot Street	16	House	6129702
Abbot Street	17	House	6129526
Abbot Street	20	House	6129673
Abbot Street	22	House	6129665
Abbot Street	23	House	6129585
Abbot Street	32	House	6129622
Abbot Street	2 to 4	House	6144689
Alexander Street	1	Commercial Building	7251646
Alexander Street	3	House	7251654
Alexander Street	4	Former Residence	7251646
Alexander Street	5	Former Residence	6110702
Algona Avenue	10	House	6183047
Argyle Street	17	House	6130885
Bryan Street	6	House	6114092
Cattley Street	60	Former Residence	6114332
Charles Street	4	House	6133592
Collins Street	25	House	6134069
Cooper Street	1	House	6134755
Cooper Street	3	House	6134763
Corcellis Street	30	House	6134990
Devon Street	6	House	6136152
Edwardes Street	3	House	6136312
Edwardes Street	7	House	6136339
Elizabeth Street	20	House	6115204
Elizabeth Street	24	House	6115191
Hale Street	14	House	6138270
Hopkinson Street	9	House	6139572
Hopkinson Street	14	House	6139409



Street Name	No	Name	PID
Hopkinson Street	18	House	6139425
Johnson Street	12	House	6139783
Jones Street	25	House	6140098
Jones Street	30	House	6139994
Linton Street	14	House	6141074
Mark Street	1	House	6142333
Mark Street	23	House	6142464
Mark Street	25	House	6142472
Menaire Road	31	Farm House	6185835
Mount Street	16	Commercial Building	6128857
Mount Street	33	Commercial Building	2666332
Mount Street	38-40	Commercial Building	6128857
Mount Street	61-65	Commercial Building	6145219
Mount Street	114	House	6143950
Mount Street	153	House	6144953
Natone Road	74	House	2021606
North Terrace	45	Former House?	6121348
Pine Avenue	10	House	6147935
Pine Avenue	20	House	6147871
Pine Avenue	22	House	6147863
Pleasant Street	1	House	6148081
Ridgley Highway	208	House	2761698
Ridgley Highway	661	Farm House	7765903
Ridgley Highway	1000	House	6194520
Ridgley Highway	1038	House	6194379
Ridgley Highway	1060	House	6194459
Smith Street	11	House	6149578
Smith Street	39	House	6149439
Stowport Road	341	House	7182951
Strahan Street	6	House	6151539
Strahan Street	15	Former Residence	6151491



Street Name	No	Name	PID
Strahan Street	22	House	6151563
Strahan Street	32	Former Residence	6151619
Strahan Street	34	House	6151627
Strahan Street	55	House	6151352
Strahan Street	46-48	House	6151651
Strahan Street	8 to 10	Houses	6151547
Swanston street	45	House	6152830
Upper Natone Road, Natone	58	Lyndhurst	7673806
Upper Natone Road, Natone	232	House	6189713
Upper Natone Road, Natone	233	Quandein	6189692
Upper Natone Road, Natone	423	House	6189879
View Road	4	House	6153825
View Road	6	House	6153833
View Road	10 to 12	House	2831174
Wilson Street	194	House	6155484
Wilson Street	196	House	6155492
Wood Street	4	House	6129278



Appendix C

Places not meeting Local Significance Threshold

Table of Places



Table 7 Table of Places that do not meet the local level threshold

Street Name	No	Name	PID
Abbot Street	7	House	6129462
Abbot Street	13	House	6129497
Abbot Street	25	House	6129593
Aileen Crescent	19	House	6130041
Alexander Street	8	Former Residence	6110550
Alexander Street	18	Former Residence	6110585
Alexander Street	20	Commercial Building	7695757
Alice Street	1	"Bougain Villa"	6110729
Alice Street	12	House	6110809
Amy Street	1	House	7254556
Amy Street	4	House	6110999
Amy Street	5	House	7254521
Argyle Street	6	House	6130797
Argyle Street	7	House	6130930
Atkins Drive		Parklands High School	6170617
Avon Street	31	House	6111211
Bass Highway	3	House	6111350
Bass Highway	15	House	6111414
Bass Hwy	78	House	6112468
Bass Hwy	113-115	House	6111887
Bay View Avenue	5	House	6113049
Best Street	1	House	2065289
Best Street	2	House	6132151
Best Street	5	House	6132127
Bird Street	83	Montello Primary School	6132389
Bourke Street	7	Former Residence	6113444
Bryan Street	10	House	6114076
Burnell Street	1	House	6114279
Cattley Street	11	Commercial Building	2810955
Charles Street	9	House	7492597



Street Name	No	Name	PID
Collins Street	6	House	6134536
Collins Street	33	House	6134093
Collins Street	35-37	House and Shop	6134122
Collins Street	39	House	6134130
Cooee Point Road	3	House	7585806
Cooper Street	6	House	6134819
Cooper Street	7	House	6134798
Cooper Street	9	House	6134800
Corcellis Street	26	House	6134974
Corcellis Street	28	House	6134982
Deacon Street	6	House	6135838
Deacon Street	11	House	6135934
Deacon Street	18	House	6135766
Deacon Street	9A	Burnie Assembly of God	6135926
Devon Street	13	House	6136072
Edwardes Street	13	House	6136419
Edwardes Street	14	House	6136451
Elizabeth Street	8	House	6115300
Elizabeth Street	28	House	6115183
Elizabeth Street	35	House	6115474
Elizabeth Street	37	House	6115482
Fidler Street	11	Cooee Uniting Church	6163994
Fidler Street	13	House	6164006
Fidler Street	30	Burnie High School	6183928
Hale Street	10	House	6138297
Halstead Street	9	House	6119504
Hamilton Street	4	House	6138588
Harrison Street	2	House	6138764
Hodgman Street	9	House	6139329
Hodgman Street	12	House	6139206
Hopkinson Street	15-17	Corner Shop	6139548



Street Name	No	Name	PID
Johnson Street	14	House	6139791
Jones Street	24	House	6139978
Jones Street	26	House	7658470
Jones Street	29	House	6140071
Jones Street	40	House	6140020
Ladbrooke Street	23-25	Commercial Building	7892849
Latrobe Street	9	Brooklyn Primary School	6164241
Mace Street	36	House	6119010
Mace Street	43	Church	6119299
Mace Street	51	House	6119256
Mace Street	53	Church	6119248
Madden Street	18	Shop	6168891
Main Road	40	Leighlands Christian School	6131378
Main Road	47	House	6183135
Main Road	48	House	6183143
Main Road	57	House	6183186
Malunna Crescent	2a	Marist Regional College	7492554
Marine Terrace	35-36	Commercial Building	6142157
Medbury Crescent	20	Burnie Church of Latterday Saints	6153374
Monington Street	17	House	6143125
Moody Street	26	House	6143395
Mooreville Road	14	Lutheran Church	7196106
Mooreville Road	102	House	7629653
Mooreville Road	16-20	University of Tasmania	6187275
Mooreville Road	22-24	Scout hall	6187259
Mooreville Road, Mooreville	460	Shamley Green	6187945
Morris Street	1	House	6120863
Morris Street	5	House	6120839
Morris Street	12	House	6120812
Natone Road	199	House	6189027



Street Name	No	Name	PID
Noel Street	1	House	6121196
Noel Street	2	House	6121276
North Terrace	42	House	6121372
North Terrace	43	House	6121364
North Terrace	44	House	6121356
North Terrace	1 to 5	Surf Club	2745778
Old Surrey Road	125	House	6176728
Olive Street	3	House	7578630
Olive Street	10	House	6121970
Olive Street	11	House	6121807
Olive Street	15	House	6121815
Olive Street	22	House	6121938
Olive Street	27	House	6121874
Olive Street	33	House	6121903
Olive Street	35	House	1956637
Olive Street	3	House	7578630
Olive Street	10	House	6121970
Oonah Road	5	Cottage	6196294
Osborne Street	2	House	6122041
Osborne Street	4	House	6122068
Osborne Street	6	House	6122076
Osborne Street	8	House	6122084
Pearl Street	6	House	6147476
Phillip Street	2	House	6147791
Pine Avenue	24	House	6147855
Pleasant Street	4	House	6147978
Princes Street	8	House	6122973
Princes Street	12	House	6122957
Reeves Street	14	House	6148233
Regent Street	6	House	6123730
Regent Street	8	House	6123722



Street Name	No	Name	PID
Ridgley Highway		Emu Bay Railway Siding, Ridgley	6194010
River Road		Rail Bridge	
Romaine Street	6	House	6148858
Romaine Street	7	House	6148882
Romaine Street	9	House	6148874
Ross Street	1	House	6124303
Saundridge Road	45-49	Former Shop	6174984
Scarfe Street	7	House	6190247
Scarfe Street	9	House	6190255
Scarfe Street	11	House	6190263
Scarfe Street	13	House	6190263
Scott Street	5	House	6149279
Seaview Avenue	30	House	6125277
Smith Street	3	House	7535032
Smith Street	31	House	7535059
Smith Street	45	House	6149404
Strahan Street	54	House	6151686
Swanston Street	2	House	6152945
Swanston Street	19	House	6152945
Thorne Street	36	Acton Primary School	6168904
Trugannini Street	20	House	6126472
Turrung Street	4	House	6126704
Turrung Street	8	House	6126683
Turrung Street	10	House	6126675
Turrung Street	14	House	6126659
Turrung Street	18	House	6126632
Turrung Street	20	House	6126624
Turrung Street	21	House	6126835
Turrung Street	27	House	6126878
Upper Bourke Street	2	House	6126907



Street Name	No	Name	PID
Upper Bourke Street	3	House	2737823
Upper Bourke Street	4	House	6126907
Upper Natone Road, Upper Natone	809	House	6191354
Van Diemens Crescent	15A	Burnie Primary	2107805
View Road	2	House	6153817
View Road	24	House	6153921
View Road	50	House and Shop	6127176
Villiers Avenue	1	House	6127539
Villiers Avenue	13	House	6127475
Wellington Street	11	House	6154043
Wesley Street	9	House	6127715
West Mooreville Road	40	House	6193157
West Mooreville Road	358	House	6192920
Wilmot Street	29	Commercial Building	6129155
Wilson Street	100	Commercial Building	6155046
Wilson Street	160	House	6155265
Wilson Street	160	House	6155265
Wilson Street	188	House	6155468
Wilson Street	192	House	6155476
Wilson Street	198	House	6155505
Wilson Street	200	House	6155513
Wood Street	6	House	6129251
Wood Street	8	House	6129243



Appendix D

Places of Unknown or Potential Significance

Table of Places



Table 8 Places of Unknown or Potential Significance

Street Name	No	Name	PID
Aileen Crescent	13	House	6130084
Aileen Crescent	17	House	6130068
Aileen Crescent	20	House	6129876
Alexander Street	36	RSL	6110630
Anglesea Street	30	House	6130666
Basils Road (off Mount Road)		Twenty Seven Mile Hut	
Bass Highway		Round Hill Quarry	
Besser Crescent	33	House	7721679
Bowskil Rd (off)		Bowskills Road Sawmill (& Tramway	
Bryan Street	9	House	6114172
Cam River (riverbank)		Potential boat slip	
Camena Road, Natone	104	House	6185018
Camena Road, Natone	260	Cottage	6184963
Charles Street	15	House	6133509
Circular Road, East Ridgley	403	House	7493071
Cooee Creek		Captain Jones Property	
Cooee Point		Cooee Point Aboriginal Historical Site	
Corcellis Street	31	House and Outbuilding	6135002
Edwardes Street	1	House/Former VDL CO. building?	7742445
Elizabeth Street	35	House	6115474
Guide Road, West Ridgley	366	Timber Slat Barn	6198468
(Hampshire southwest area)		Twenty Five Mile Sawmill (Ringwood Sawmill)	
Hilders Rd		Hilder's Upper Natone Sawmill	
Hodgman Street	4	House	6139222
Iron Mine Rd		Blythe River Iron Mine (Sushames Hill Iron Mine)	
Jones Street	19	House	6140127



Street Name	No	Name	PID
Linton Street	19	House	6140899
Minna Road		Site of Potential Foot Jetty	
Moody Street, Hill Street		Moody/Hill Street Area	
Mooreville Road	128-206	Freer Farm Centre	7489558
Mooreville Road, Mooreville	656	Farm House	6192779
Morse Street	2	House	6143790
Mount Street	147	House	6145008
Mount Street	227	House	6170932
Old Surrey Road	145	Lactos Cheese Factory	7578999
Old Surrey Road		House	6176816
Old Surrey Road	202	House	7658411
Oonah Road		Oonah Road House Site 1	
Oonah Road	44	Site of Potential Structure	6198302
Oonah Road	1458	Tewkesbury Research Farm Agricultural Research Station	2597920
Pearl Street	16	House	6147521
Phillip Street	9	Methodist Church	7535059
Port Road		Burnie Port	7609409, 7787918, 7183217
Pleasant Street	20	House	7617361
Queen Street	16	House	6123183
Ridgley area		Ridgley Burnie Timber & Brick Co. Sawmill	
Ridgley area		Ridgley Ruins	
Ridgley area		Ridgley Burnie Timber & Brick Co. Sawmill	
Ridgley north area		Seven Mile Sawmill	
Ridgley Highway (Old Surrey Road, Mount Road, Waratah Road)		Old Surrey Road	
River Road (off)		Site of Potential Foot Jetty	
Rogetta Rd (off)		Rogetta Sawmill & Tramway	

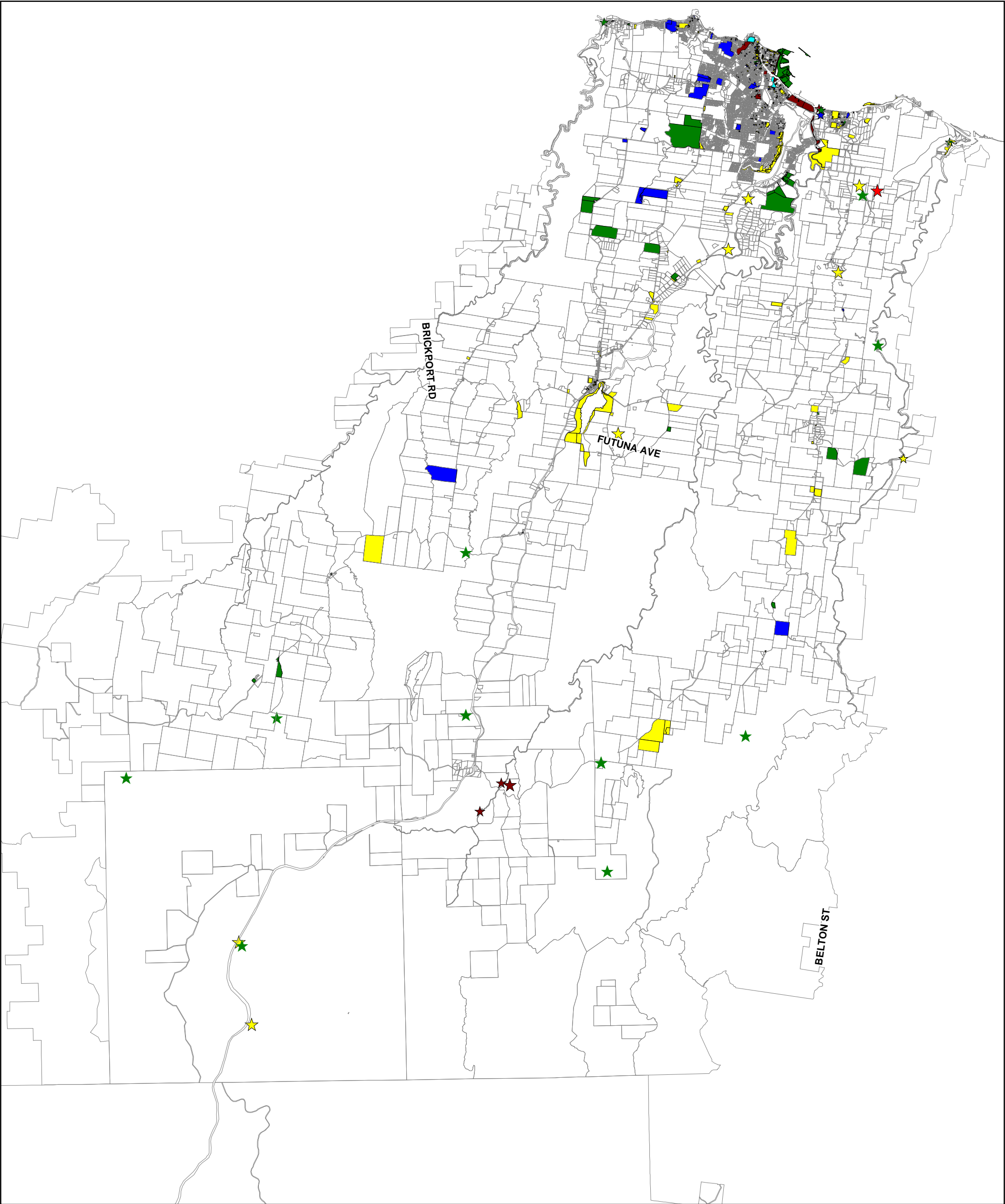


Street Name	No	Name	PID
Smith Street	9	House	6149586
Stowport Road (off)		APPM Stowport Rd Sawmill (T Butler & FH Haines Sawmill)	
Talunnah Rd		Cummings Bros #2 Sawmill	
Talunnah Rd		Talunah Road House Site 1	
Talunah Road	1115	Cottage	6198070
Talunah Road	1117	Complex of outbuildings	6198089
Talunah Road	1121	Cottage	6198097
Upper Natone area		Blythe River Underground Section (natural feature)	
Upper Natone Road, Upper Natone	723	Windrush	6191282
Upper Natone Rd (to south of)		Kara Mine	
Upper Natone Rd (off)		Mount Housetop Tin Mine	
Upper Natone Rd (off)		Osborne Creek House	
Tewkesbury area		St Joseph Falls	
Tewkesbury area		Deacons Oonah Sawmill	
View Road	14	House	6153884
West Mooreville Road, West Mooreville	448	Farm House	7901303
Wilson Street	56-62	Former Star Theatre	6129040
West Mooreville Road, West Mooreville	712	Farm House	6192779
West Mooreville Road, West Mooreville	799	Cottage	1896611
West Park Grove	31	Former Shop	6127803



Appendix E

Maps of Heritage Places



LEGEND

- | | | |
|-----------------------------|--------------------------|---------|
| Does not meet the threshold | Local, potentially State | Unknown |
| Local | State | |

1:120,000
at A3

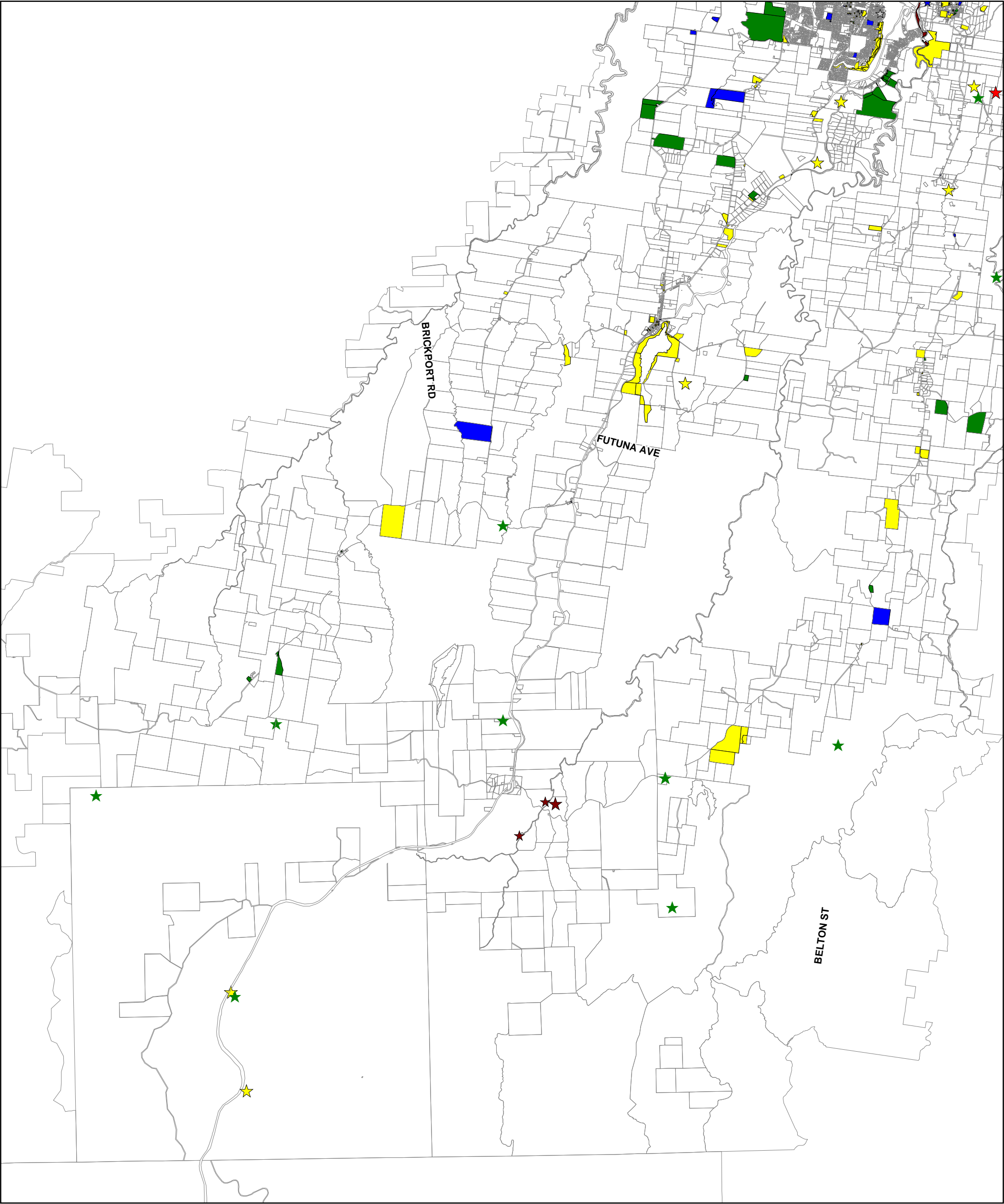
Map Projection: Universal Transverse Mercator
Horizontal Datum: Geocentric Datum of Australia 1994
Grid: Map Grid of Australia, Zone 55



Burnie City Council	Job Number	32-14237
Burnie Heritage Study	Revision	A
	Date	24/2/2010

Heritage Places Classification
Overview

Figure 1



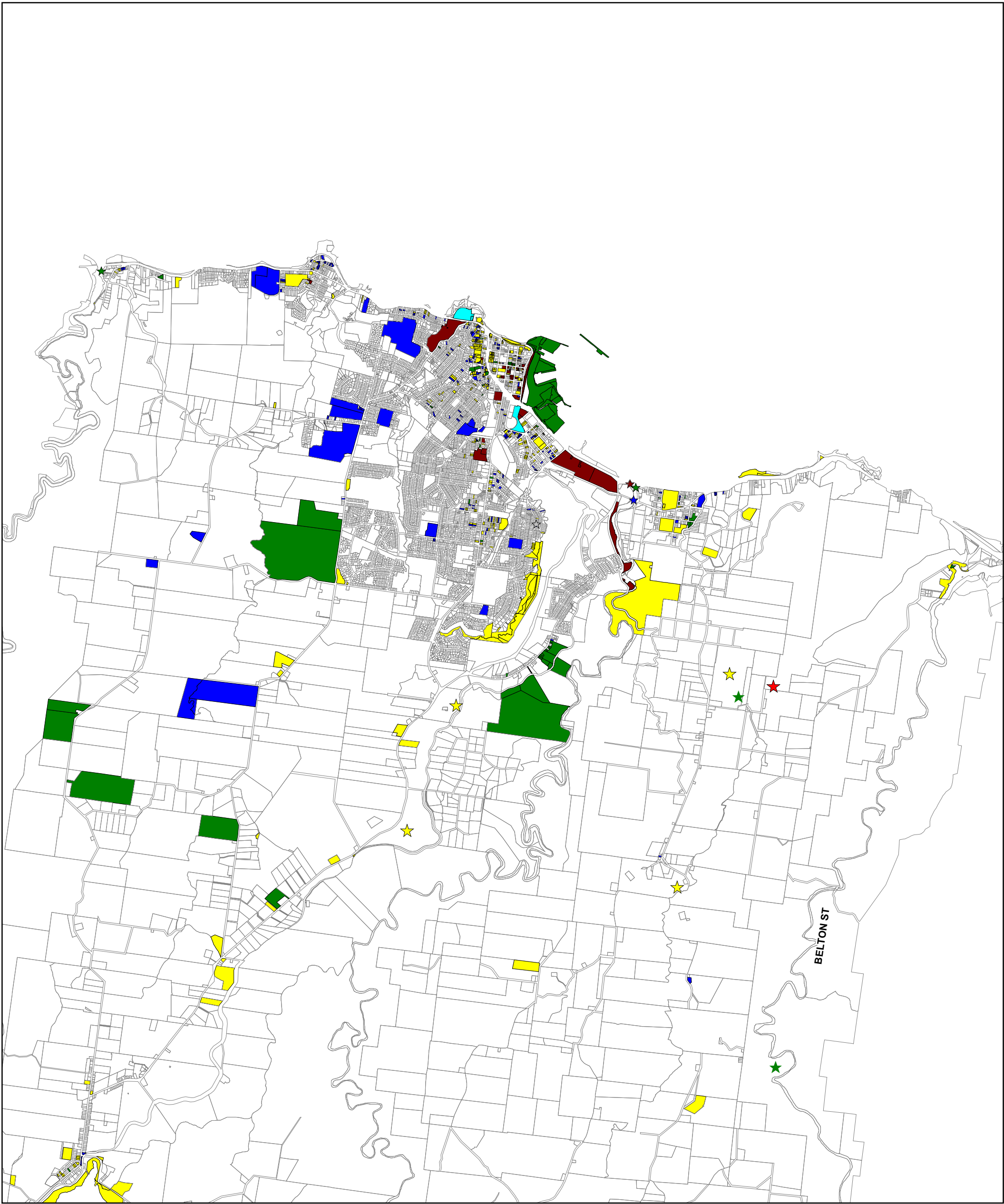
LEGEND

- Does not meet the threshold

Local, potentially State

Unknown
- Local

State



LEGEND

- | | | |
|-----------------------------|--------------------------|---------|
| Does not meet the threshold | Local, potentially State | Unknown |
| Local | State | |

1:120,000
at A3



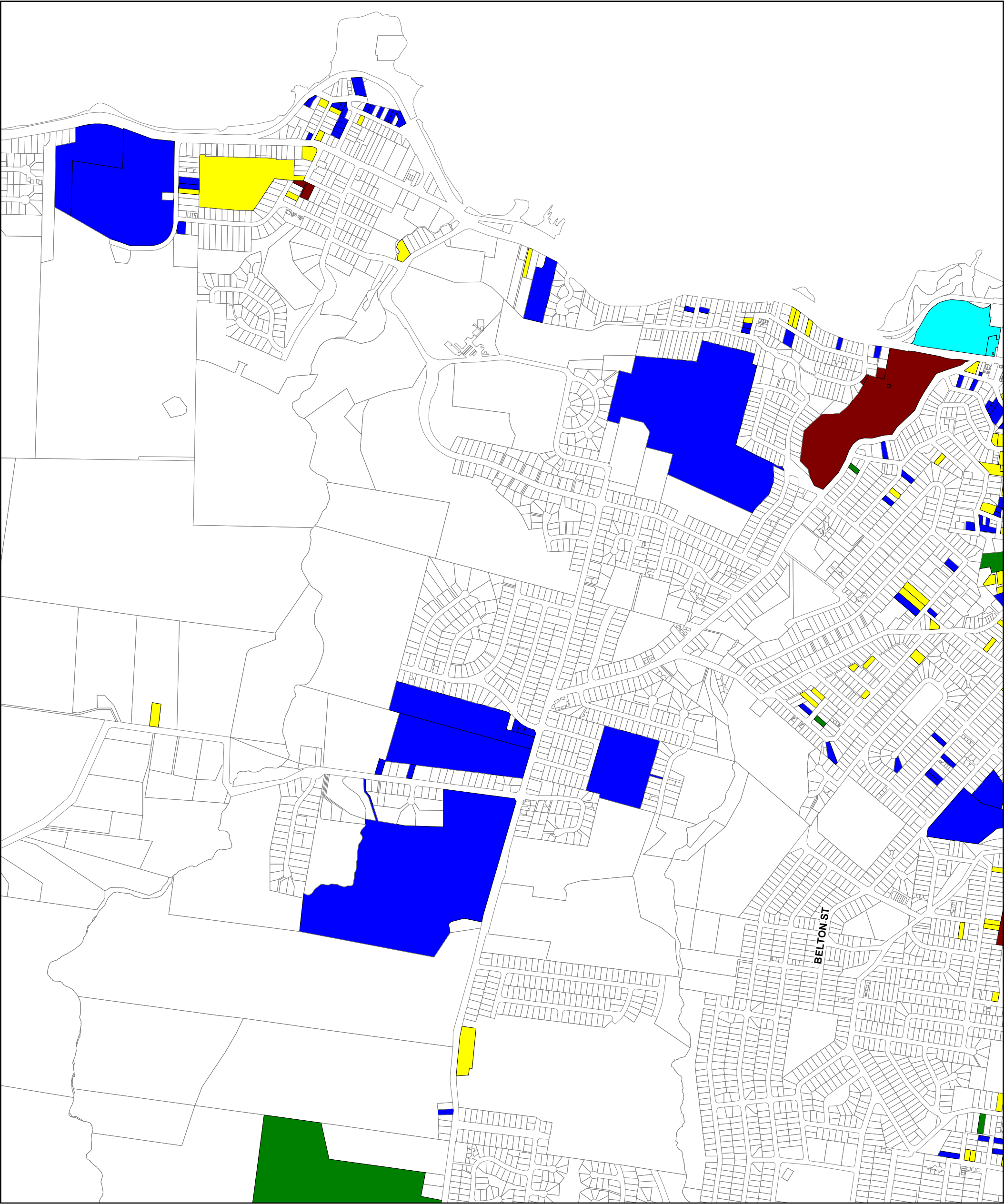
CLIENTS|PEOPLE|PERFORMANCE

Burnie City Council
Burnie Heritage Study

Job Number	32-14237
Revision	A
Date	24/2/2010

Heritage Places Classification Urban Areas

Figure 3



LEGEND

- | | | |
|-------------------------------|----------------------------|-----------|
| ■ Does not meet the threshold | ■ Local, potentially State | ■ Unknown |
| ■ Local | ■ State | |

1:12,000
at A3

Map Projection: Universal Transverse Mercator
Horizontal Datum: Geocentric Datum of Australia 1994
Grid: Map Grid of Australia, Zone 55



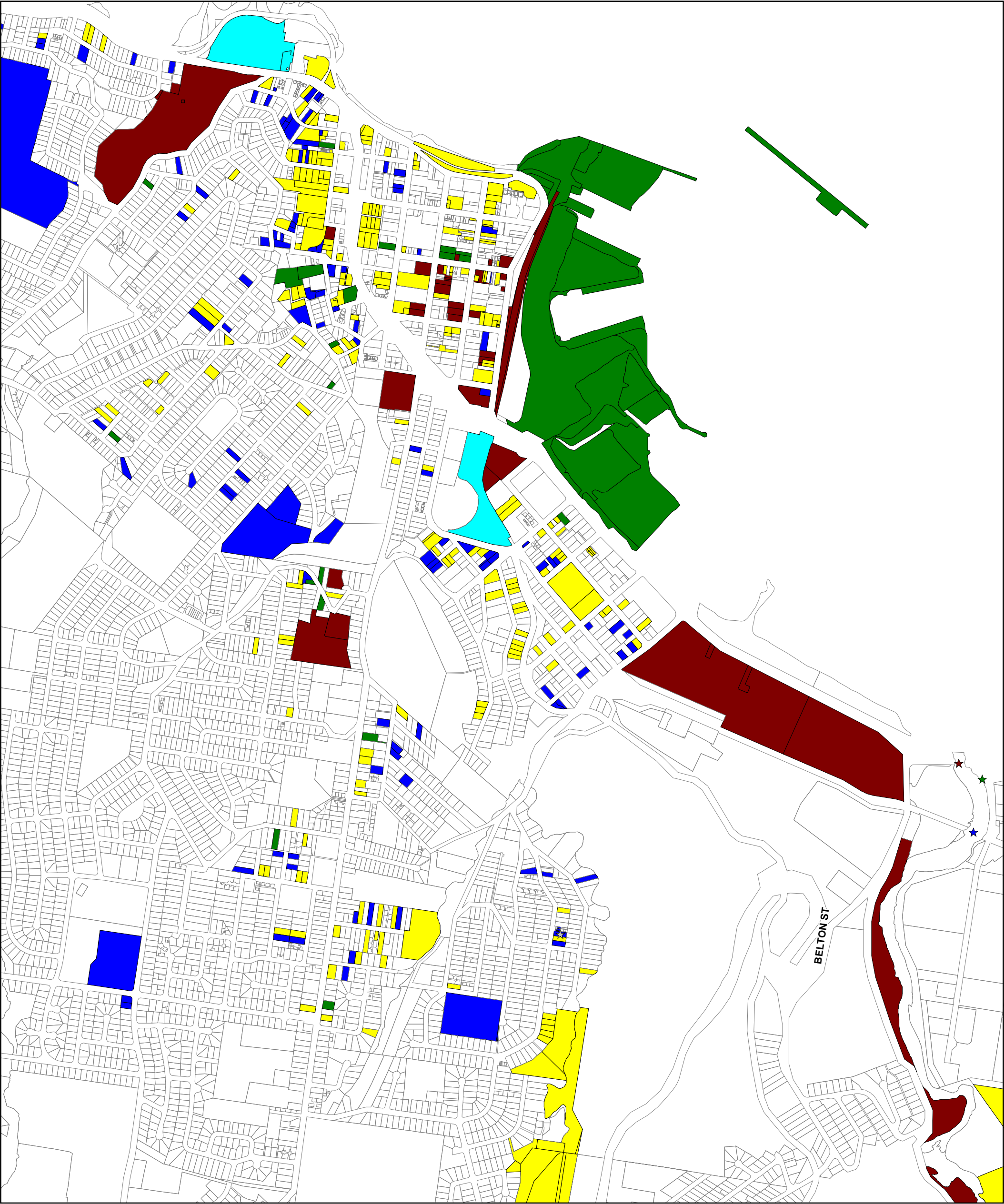
CLIENTS|PEOPLE|PERFORMANCE

Burnie City Council
Burnie Heritage Study

Job Number	32-14237
Revision	A
Date	24/2/2010

Heritage Places Classification
Urban Areas - Western Burnie

Figure 4



LEGEND

- | | | |
|-----------------------------|--------------------------|---------|
| Does not meet the threshold | Local, potentially State | Unknown |
| Local | State | |

1:12,000
at A3

Map Projection: Universal Transverse Mercator
Horizontal Datum: Geocentric Datum of Australia 1994
Grid: Map Grid of Australia, Zone 55



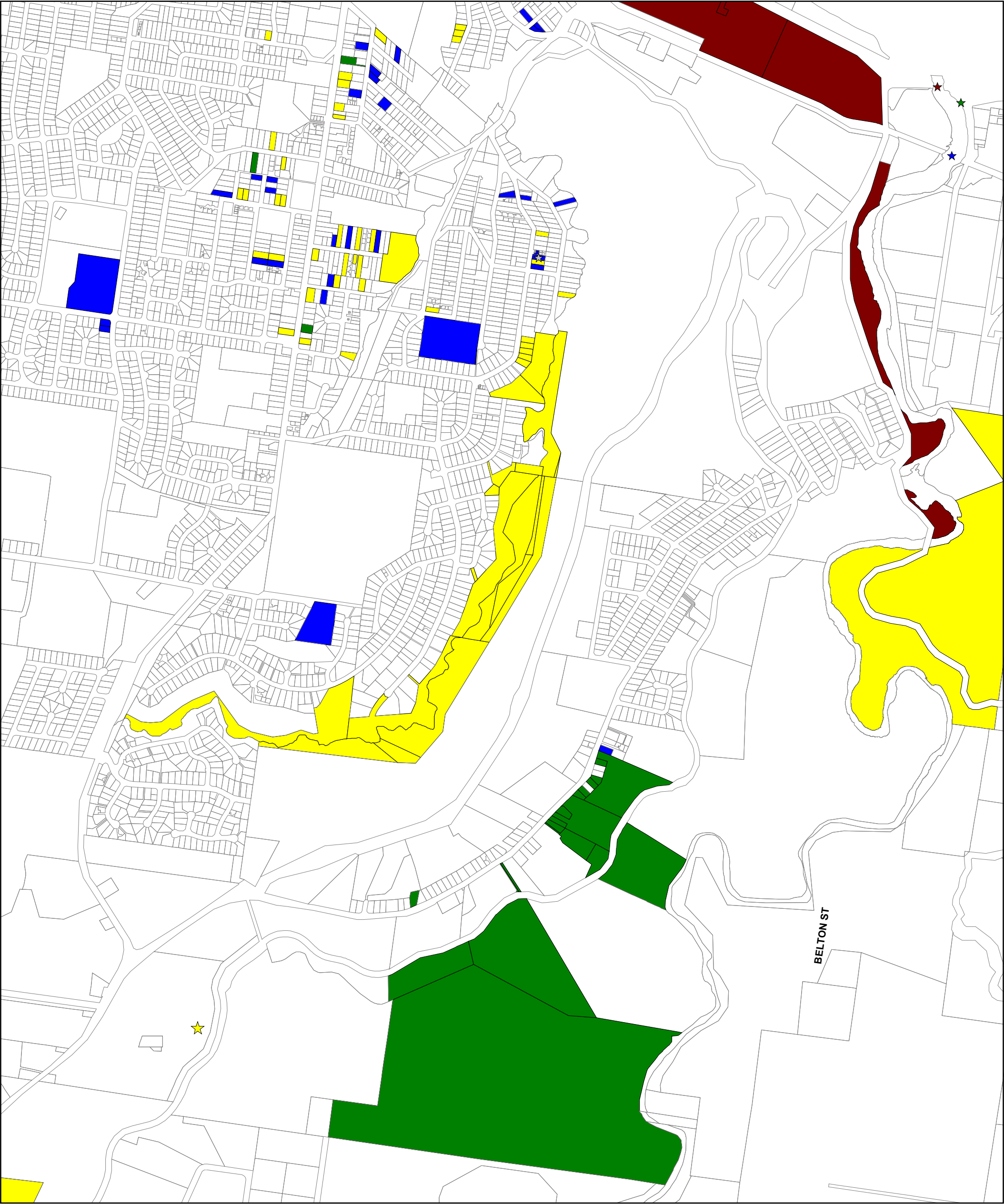
CLIENTS|PEOPLE|PERFORMANCE

Burnie City Council
Burnie Heritage Study

Job Number	32-14237
Revision	A
Date	24/2/2010

Heritage Places Classification
Urban Areas - Eastern Burnie

Figure 5



LEGEND

- | | | |
|-----------------------------|--------------------------|---------|
| Does not meet the threshold | Local, potentially State | Unknown |
| Local | State | |

1:12,000
at A3

Map Projection: Universal Transverse Mercator
Horizontal Datum: Geocentric Datum of Australia 1994
Grid: Map Grid of Australia, Zone 55



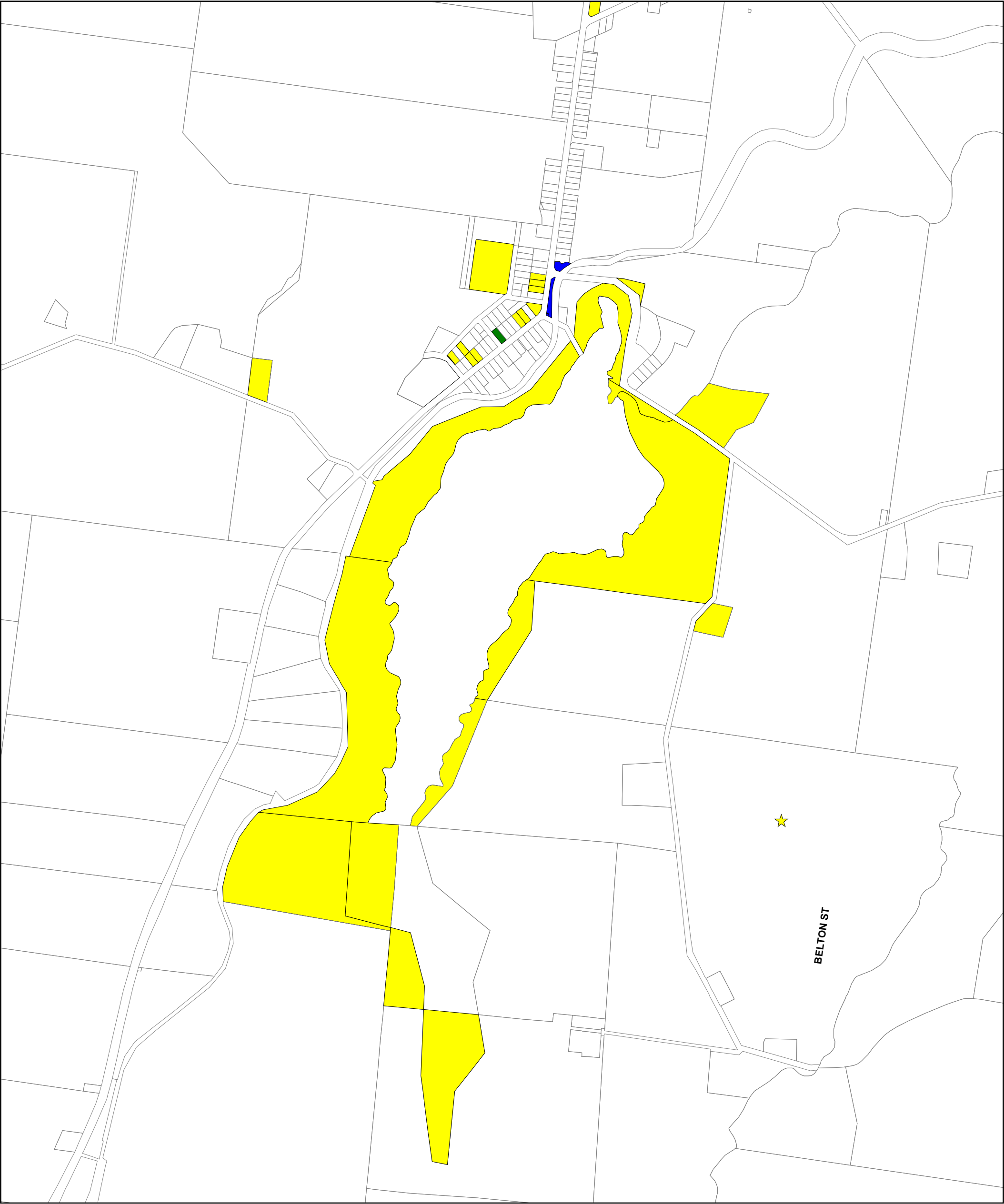
CLIENTS|PEOPLE|PERFORMANCE

Burnie City Council
Burnie Heritage Study

Job Number	32-14237
Revision	A
Date	24/2/2010

Heritage Places Classification
Urban Areas - South Eastern Burnie

Figure 6



LEGEND

- | | | |
|-----------------------------|--------------------------|---------|
| Does not meet the threshold | Local, potentially State | Unknown |
| Local | State | |

1:12,000
at A3

Map Projection: Universal Transverse Mercator
Horizontal Datum: Geocentric Datum of Australia 1994
Grid: Map Grid of Australia, Zone 55



CLIENTS|PEOPLE|PERFORMANCE

Burnie City Council
Burnie Heritage Study

Job Number 32-14237
Revision A
Date 24/2/2010

Heritage Places Classification
Urban Areas - Ridgley Area

Figure 7



Appendix F

Inventory of Places



Refer to separate Appendix F documents.



GHD

2 Salamanca Square Hobart 7000

GPO Box 667 Hobart 7001

T: 03 6210 0600 F: 03 6210 0601 E: hbamail@ghd.com.au

© GHD 2009

This document is and shall remain the property of GHD. The document may only be used for the purpose for which it was commissioned and in accordance with the Terms of Engagement for the commission. Unauthorised use of this document in any form whatsoever is prohibited.

Document Status

Rev No.	Author	Reviewer		Approved for Issue		
		Name	Signature	Name	Signature	Date
0	K.Harris J. Puustinen	J.Puustinen A. McConnell	ON FILE	A. Brownlie	ON FILE	03/10